

For Research Use Only

SHLD1 Polyclonal antibody

Catalog Number: 24347-1-AP



Basic Information

Catalog Number: 24347-1-AP	GenBank Accession Number: BC035800	Purification Method: Antigen affinity purification
Size: 150ul , Concentration: 590 µg/ml by Nanodrop;	GeneID (NCBI): 149840	Recommended Dilutions: WB: 1:500-1:2000 IHC: 1:50-1:500
Source: Rabbit	UNIPROT ID: Q8IY10	
Isotype: IgG	Full Name: chromosome 20 open reading frame 196	
Immunogen Catalog Number: AG19727	Calculated MW: 205 aa, 23 kDa	
	Observed MW: 25 kDa	

Applications

Tested Applications:

WB, IHC, ELISA

Species Specificity:

human, mouse

Note-IHC: suggested antigen retrieval with TE buffer pH 9.0; (*) Alternatively, antigen retrieval may be performed with citrate buffer pH 6.0

Positive Controls:

WB : mouse brain tissue,

IHC : human ovary tumor tissue,

Background Information

SHLD1, also known as FAM35A, is a key protein in the field of DNA damage repair. As a core component of the Shieldin complex, SHLD1 plays a critical role in maintaining genomic stability. Its primary function is to inhibit the resection of DNA double-strand break ends, directing repair toward the non-homologous end joining pathway while suppressing accurate homologous recombination repair. This function makes SHLD1 an important target for cancer therapy. In BRCA-mutant tumors, the expression level of SHLD1 directly affects the efficacy of PARP inhibitors-intact SHLD1 function renders cancer cells sensitive to the drugs, while its loss leads to drug resistance. Therefore, SHLD1 is not only a fundamental element in basic research on DNA damage response mechanisms but also a highly valuable tumor biomarker and prognostic indicator, offering new directions for personalized cancer treatment.

Storage

Storage:

Store at -20°C. Stable for one year after shipment.

Storage Buffer:

PBS with 0.02% sodium azide and 50% glycerol, pH7.3

Aliquoting is unnecessary for -20°C storage

*** 20ul sizes contain 0.1% BSA

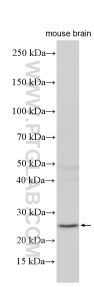
For technical support and original validation data for this product please contact:

T: 1 (888) 4PTGLAB (1-888-478-4522) (toll free in USA), or 1(312) 455-8498 (outside USA)

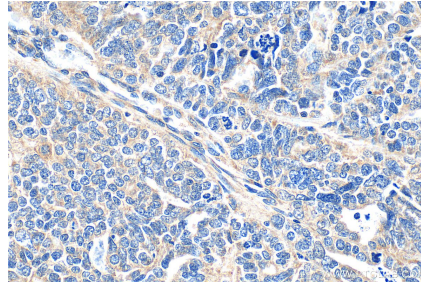
E: proteintech@ptglab.com
W: ptglab.com

This product is exclusively available under Proteintech Group brand and is not available to purchase from any other manufacturer.

Selected Validation Data



Various lysates were subjected to SDS PAGE followed by western blot with 24347-1-AP (SHLD1 antibody) at dilution of 1:1000 incubated at room temperature for 1.5 hours.



Immunohistochemical analysis of paraffin-embedded human ovary tumor tissue slide using 24347-1-AP (SHLD1 antibody) at dilution of 1:200 (under 40x lens). Heat mediated antigen retrieval with Tris-EDTA buffer (pH 9.0).