

For Research Use Only

# ABCA8 Polyclonal antibody, PBS Only

Catalog Number: 24351-1-PBS



## Basic Information

**Catalog Number:**

24351-1-PBS

**Size:**

100ug, Concentration: 1 mg/ml by Nanodrop;

**Source:**

Rabbit

**Isotype:**

IgG

**Immunogen Catalog Number:**

AG18991

**GenBank Accession Number:**

bc130280

**GeneID (NCBI):**

10351

**UNIPROT ID:**

O94911

**Full Name:**

ATP-binding cassette, sub-family A (ABC1), member 8

**Calculated MW:**

1581 aa, 179 kDa

**Observed MW:**

160-180 kDa

**Purification Method:**

Antigen affinity purification

## Applications

**Tested Applications:**

WB, IHC, Indirect ELISA

**Species Specificity:**

human, mouse

## Storage

**Storage:**

Store at -80°C.

**Storage Buffer:**

PBS only, pH7.3

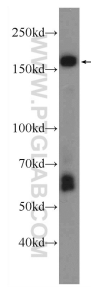
For technical support and original validation data for this product please contact:

T: 1 (888) 4PTGLAB (1-888-478-4522) (toll free in USA), or 1(312) 455-8498 (outside USA)

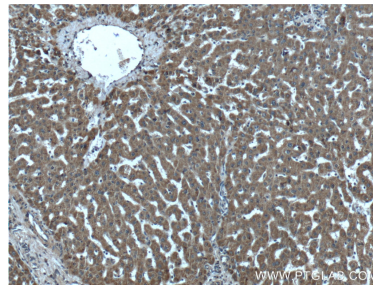
E: [proteintech@ptglab.com](mailto:proteintech@ptglab.com)  
W: [ptglab.com](http://ptglab.com)

This product is exclusively available under Proteintech Group brand and is not available to purchase from any other manufacturer.

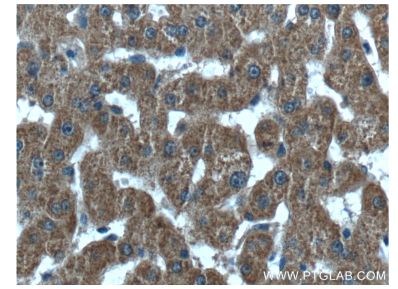
## Selected Validation Data



mouse brain tissue were subjected to SDS PAGE followed by western blot with 24351-1-AP (ABCA8 Antibody) at dilution of 1:300 incubated at room temperature for 1.5 hours. This data was developed using the same antibody clone with 24351-1-PBS in a different storage buffer formulation.



Immunohistochemical analysis of paraffin-embedded human liver tissue slide using 24351-1-AP (ABCA8 Antibody) at dilution of 1:200 (under 10x lens). This data was developed using the same antibody clone with 24351-1-PBS in a different storage buffer formulation.



Immunohistochemical analysis of paraffin-embedded human liver tissue slide using 24351-1-AP (ABCA8 Antibody) at dilution of 1:200 (under 40x lens). This data was developed using the same antibody clone with 24351-1-PBS in a different storage buffer formulation.