

For Research Use Only

# TMEM25 Polyclonal antibody

Catalog Number: 24361-1-AP

Featured Product

1 Publications



## Basic Information

### Catalog Number:

24361-1-AP

### Size:

150ul, Concentration: 400 ug/ml by Nanodrop and 267 ug/ml by Bradford method using BSA as the standard;

### Source:

Rabbit

### Isotype:

IgG

### Immunogen Catalog Number:

AG19964

### GenBank Accession Number:

BC051841

### GeneID (NCBI):

84866

### UNIPROT ID:

Q86YD3

### Full Name:

transmembrane protein 25

### Calculated MW:

366 aa, 39 kDa

### Observed MW:

40 kDa

### Purification Method:

Antigen affinity purification

### Recommended Dilutions:

WB 1:5000-1:50000

IHC 1:250-1:1000

## Applications

### Tested Applications:

WB, IHC, ELISA

### Cited Applications:

WB, IF, CoIP

### Species Specificity:

human, mouse, rat

### Cited Species:

human, mouse

### Positive Controls:

WB : mouse liver tissue, rat liver tissue

IHC : human liver tissue,

**Note-IHC: suggested antigen retrieval with TE buffer pH 9.0; (\*) Alternatively, antigen retrieval may be performed with citrate buffer pH 6.0**

## Background Information

TMEM25 is a novel member of the immunoglobulin superfamily. BC042896 and AY358919 cDNAs are derived from human TMEM25 gene. TMEM25 isoform 1 (BC042896), consisting of exons 1-9, encodes a 366-aa transmembrane protein. TMEM25 isoform 2 (AY358919), consisting of exons 1-4 and 6-9, encodes a 322-aa secreted protein (PMID:15254712). Human TMEM25 gene are found to encode transmembrane-type as well as secreted-type proteins due to alternative splicing of exon-skipping type. TMEM25 mRNA is expressed in brain, including cerebellar cortex and hippocampus, as well as in neuroblastoma, brain tumors, and gastric cancer. TMEM25 is a target of pharmacogenomics in the field of oncology and regenerative medicine. TMEM25 mRNAs may be useful members of a panel of favorable prognostic and predictive markers for breast cancer (PMID:19776672).

## Notable Publications

Author	Pubmed ID	Journal	Application
Haiqing Zhang	31424425	J Clin Invest	WB,IF,CoIP

## Storage

### Storage:

Store at -20°C. Stable for one year after shipment.

### Storage Buffer:

PBS with 0.02% sodium azide and 50% glycerol pH 7.3.

Aliquoting is unnecessary for -20°C storage

\*\*\* 20ul sizes contain 0.1% BSA

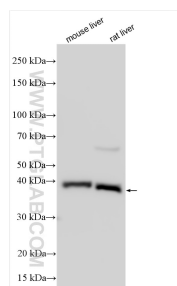
For technical support and original validation data for this product please contact:

T: 1 (888) 4PTGLAB (1-888-478-4522) (toll free in USA), or 1(312) 455-8498 (outside USA)

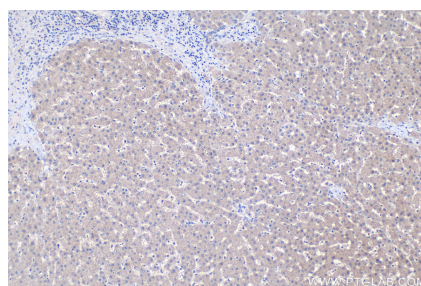
E: [proteintech@ptglab.com](mailto:proteintech@ptglab.com)  
W: [ptglab.com](http://ptglab.com)

This product is exclusively available under Proteintech Group brand and is not available to purchase from any other manufacturer.

## Selected Validation Data



Various lysates were subjected to SDS PAGE followed by western blot with 24361-1-AP (TMEM25 antibody) at dilution of 1:10000 incubated at room temperature for 1.5 hours.



Immunohistochemical analysis of paraffin-embedded human liver tissue slide using 24361-1-AP (TMEM25 antibody) at dilution of 1:500 (under 10x lens). Heat mediated antigen retrieval with Tris-EDTA buffer (pH 9.0).