

For Research Use Only

# GPATCH2 Polyclonal antibody

Catalog Number: 24366-1-AP **1 Publications**



## Basic Information

<b>Catalog Number:</b> 24366-1-AP	<b>GenBank Accession Number:</b> BC063474	<b>Purification Method:</b> Antigen affinity purification
<b>Size:</b> 150ul , Concentration: 1000 µg/ml by Nanodrop and 513 µg/ml by Bradford method using BSA as the standard;	<b>GeneID (NCBI):</b> 55105	<b>Recommended Dilutions:</b> WB 1:500-1:1000 IHC 1:20-1:200
<b>Source:</b> Rabbit	<b>Full Name:</b> G patch domain containing 2	
<b>Isotype:</b> IgG	<b>Calculated MW:</b> 528 aa, 59 kDa	
<b>Immunogen Catalog Number:</b> AG21647	<b>Observed MW:</b> 65-70 kDa	

## Applications

<b>Tested Applications:</b> IHC, WB, ELISA	<b>Positive Controls:</b>
<b>Cited Applications:</b> WB	<b>WB :</b> mouse spleen tissue, mouse kidney tissue, mouse thymus tissue
<b>Species Specificity:</b> human, mouse	<b>IHC :</b> human breast cancer tissue, human testis tissue
<b>Cited Species:</b> mouse	
<b>Note-IHC: suggested antigen retrieval with TE buffer pH 9.0; (*) Alternatively, antigen retrieval may be performed with citrate buffer pH 6.0</b>	

## Background Information

### Notable Publications

Author	Pubmed ID	Journal	Application
Destiny Dalseno	36973252	Cell Death Dis	WB

## Storage

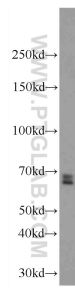
**Storage:**  
Store at -20°C. Stable for one year after shipment.  
**Storage Buffer:**  
PBS with 0.02% sodium azide and 50% glycerol pH 7.3.  
Aliquoting is unnecessary for -20°C storage

\*\*\* 20ul sizes contain 0.1% BSA

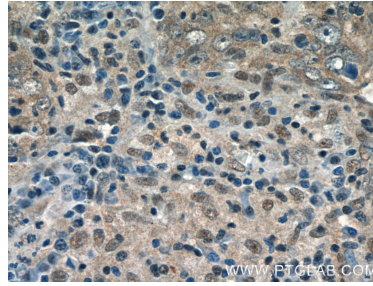
For technical support and original validation data for this product please contact:  
T: 1 (888) 4PTGLAB (1-888-478-4522) (toll free in USA), or 1(312) 455-8498 (outside USA)      E: proteintech@ptglab.com  
W: ptglab.com

This product is exclusively available under Proteintech Group brand and is not available to purchase from any other manufacturer.

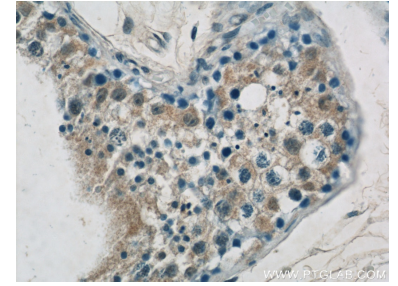
## Selected Validation Data



mouse spleen tissue were subjected to SDS PAGE followed by western blot with 24366-1-AP (GPATCH2 Antibody) at dilution of 1:600 incubated at room temperature for 1.5 hours.



Immunohistochemical analysis of paraffin-embedded human breast cancer tissue slide using 24366-1-AP (GPATCH2 Antibody) at dilution of 1:50 (under 40x lens).



Immunohistochemical analysis of paraffin-embedded human testis tissue slide using 24366-1-AP (GPATCH2 Antibody) at dilution of 1:50 (under 40x lens).