

For Research Use Only

TRIM67 Polyclonal antibody

Catalog Number: 24369-1-AP **2 Publications**



Basic Information

Catalog Number: 24369-1-AP	GenBank Accession Number: BC157055	Purification Method: Antigen affinity purification
Size: 150ul , Concentration: 850 µg/ml by Nanodrop and 433 µg/ml by Bradford method using BSA as the standard;	GeneID (NCBI): 440730	Recommended Dilutions: WB 1:500-1:1000
Source: Rabbit	Full Name: tripartite motif-containing 67	
Isotype: IgG	Calculated MW: 783 aa, 84 kDa	
Immunogen Catalog Number: AG21632	Observed MW: 70 kDa	

Applications

Tested Applications: WB, ELISA	Positive Controls: WB : HepG2 cells,
Cited Applications: IF, IHC	
Species Specificity: human, mouse	
Cited Species: human, mouse, pig	

Background Information

TRIM67 (Tripartite motif-containing protein 67) is also named as TNL and belongs to the TRIM/RBCC family. The deduced protein contains an N-terminal RING finger domain, 2 B-boxes, a coiled-coil region, a COS box, an FN3 domain, and a B30.2 domain. TRIM67 shares 65% amino acid identity with TRIM9. This protein has 2 isoforms produced by alternative splicing.

Notable Publications

Author	Pubmed ID	Journal	Application
Qihui Luo	35887011	Int J Mol Sci	
Christopher M Bartley	37632288	Ann Neurol	IHC, IF

Storage

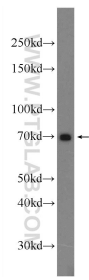
Storage:
Store at -20°C. Stable for one year after shipment.
Storage Buffer:
PBS with 0.02% sodium azide and 50% glycerol pH 7.3.
Aliquoting is unnecessary for -20°C storage

*** 20ul sizes contain 0.1% BSA

For technical support and original validation data for this product please contact:
T: 1 (888) 4PTGLAB (1-888-478-4522) (toll free in USA), or 1(312) 455-8498 (outside USA)
E: proteintech@ptglab.com
W: ptglab.com

This product is exclusively available under Proteintech Group brand and is not available to purchase from any other manufacturer.

Selected Validation Data



HepG2 cells were subjected to SDS PAGE followed by western blot with 24369-1-AP (TRIM67 Antibody) at dilution of 1:600 incubated at room temperature for 1.5 hours.