

For Research Use Only

# MSL1 Polyclonal antibody

Catalog Number: 24373-1-AP

Featured Product

4 Publications



## Basic Information

Catalog Number:

24373-1-AP

Size:

150ul, Concentration: 550 ug/ml by Nanodrop and 320 ug/ml by Bradford method using BSA as the standard;

Source:

Rabbit

Isotype:

IgG

Immunogen Catalog Number:

AG18024

GenBank Accession Number:

BC122543

GeneID (NCBI):

339287

UNIPROT ID:

Q68DK7

Full Name:

male-specific lethal 1 homolog (Drosophila)

Calculated MW:

614 aa, 67 kDa

Observed MW:

67 kDa

Purification Method:

Antigen affinity purification

Recommended Dilutions:

WB 1:500-1:1000

## Applications

Tested Applications:

WB, ELISA

Cited Applications:

WB

Species Specificity:

human

Cited Species:

human

Positive Controls:

WB : HeLa cells,

## Background Information

Male-specific lethal 1 (MSL1) is critical for the formation of MSL histone acetyltransferase complex which acetylates histone H4 Lys16 (H4K16ac) to activate gene expression.

## Notable Publications

Author	Pubmed ID	Journal	Application
Tao Wei	35416545	Cell Mol Life Sci	WB
Lifu Luo	40221412	Cell Death Dis	WB
Wenqi Chen	39250546	FEBS J	WB

## Storage

Storage:

Store at -20°C. Stable for one year after shipment.

Storage Buffer:

PBS with 0.02% sodium azide and 50% glycerol, pH7.3

Aliquoting is unnecessary for -20°C storage

\*\*\* 20ul sizes contain 0.1% BSA

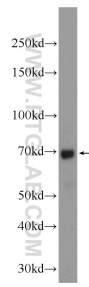
For technical support and original validation data for this product please contact:

T: 1 (888) 4PTGLAB (1-888-478-4522) (toll free in USA), or 1(312) 455-8498 (outside USA)

E: [proteintech@ptglab.com](mailto:proteintech@ptglab.com)  
W: [ptglab.com](http://ptglab.com)

This product is exclusively available under Proteintech Group brand and is not available to purchase from any other manufacturer.

## Selected Validation Data



HeLa cells were subjected to SDS PAGE followed by western blot with 24373-1-AP (MSL1 Antibody) at dilution of 1:600 incubated at room temperature for 1.5 hours.