

For Research Use Only

SETD6 Polyclonal antibody

Catalog Number: 24377-1-AP



Basic Information

Catalog Number:

24377-1-AP

Size:

150ul, Concentration: 1100 ug/ml by Nanodrop and 567 ug/ml by Bradford method using BSA as the standard;

Source:

Rabbit

Isotype:

IgG

Immunogen Catalog Number:

AG19485

GenBank Accession Number:

BC022451

GeneID (NCBI):

79918

UNIPROT ID:

Q8TBK2

Full Name:

SET domain containing 6

Calculated MW:

473 aa, 53 kDa

Observed MW:

53 kDa

Purification Method:

Antigen affinity purification

Recommended Dilutions:

WB 1:500-1:1000

Applications

Tested Applications:

WB, ELISA

Species Specificity:

human, mouse

Positive Controls:

WB : RAW 264.7 cells,

Background Information

SETD6 also named as SET domain containing 6 is a 473 amino-acid protein, which localizes in the Nucleus. The molecular weight of SETD6 is 53kDa. SETD6 consists of 1 SET domain and belongs to the class V-like SAM-binding methyltransferase superfamily. SETD6 as a protein-lysine N-methyltransferase that specifically monomethylates at Lysine 310 of the RELA subunit of NF-kappa-B complex, leading to down-regulate NF-kappa-B transcription factor activity.

Storage

Storage:

Store at -20°C. Stable for one year after shipment.

Storage Buffer:

PBS with 0.02% sodium azide and 50% glycerol pH 7.3.

Aliquoting is unnecessary for -20°C storage

*** 20ul sizes contain 0.1% BSA

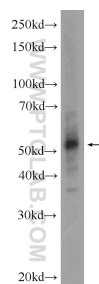
For technical support and original validation data for this product please contact:

T: 1 (888) 4PTGLAB (1-888-478-4522) (toll free in USA), or 1(312) 455-8498 (outside USA)

E: proteintech@ptglab.com
W: ptglab.com

This product is exclusively available under Proteintech Group brand and is not available to purchase from any other manufacturer.

Selected Validation Data



RAW 264.7 cells were subjected to SDS PAGE followed by western blot with 24377-1-AP (SETD6 Antibody) at dilution of 1:600 incubated at room temperature for 1.5 hours.