

For Research Use Only

METTL13 Polyclonal antibody

Catalog Number: 24379-1-AP



Basic Information

Catalog Number: 24379-1-AP	GenBank Accession Number: BC029083	Purification Method: Antigen affinity purification
Size: 150ul , Concentration: 500 ug/ml by Nanodrop;	GeneID (NCBI): 51603	Recommended Dilutions: WB: 1:500-1:1000 IF/ICC: 1:200-1:800
Source: Rabbit	UNIPROT ID: Q8N6RO	
Isotype: IgG	Full Name: methyltransferase like 13	
Immunogen Catalog Number: AG19355	Calculated MW: 699 aa, 79 kDa	
	Observed MW: 72-78 kDa	

Applications

Tested Applications: WB, IF/ICC, ELISA	Positive Controls: WB : 5637 cells, IF/ICC : U-251 cells,
Species Specificity: human	

Background Information

Protein methyltransferase like 13 (METTL13), also called FEAT, is coded by gene METTL13, which is located at chromosome 1q24.3. Purified from rat livers in 2011 by a Japanese researcher, METTL13 was found to be abnormally overexpressed in several human cancers including lung cancer and to drive tumorigenesis in transgenic mice. A study indicated that METTL13 inhibits apoptosis of lung, breast and liver cancer cells and miR-16 can repress the expression of METTL13 by binding to its 3'-untranslated region. (PMID: 33985542)

Storage

Storage:
Store at -20°C. Stable for one year after shipment.
Storage Buffer:
PBS with 0.02% sodium azide and 50% glycerol, pH7.3
Aliquoting is unnecessary for -20°C storage

*** 20ul sizes contain 0.1% BSA

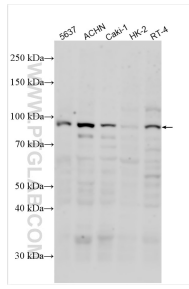
For technical support and original validation data for this product please contact:

T: 1 (888) 4PTGLAB (1-888-478-4522) (toll free in USA), or 1(312) 455-8498 (outside USA)

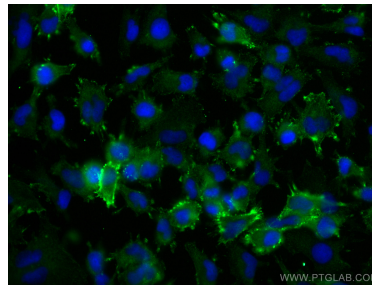
E: proteintech@ptglab.com
W: ptglab.com

This product is exclusively available under Proteintech Group brand and is not available to purchase from any other manufacturer.

Selected Validation Data



Various lysates were subjected to SDS PAGE followed by western blot with 24379-1-AP (METTL13 antibody) at dilution of 1:500 incubated at room temperature for 1.5 hours.



Immunofluorescent analysis of (-20°C Ethanol) fixed U-251 cells using METTL13 antibody (24379-1-AP) at dilution of 1:400 and CoraLite® 488-Conjugated AffiniPure Goat Anti-Rabbit IgG(H+L).