

For Research Use Only

Shootin 1 Polyclonal antibody

Catalog Number: 24383-1-AP

Featured Product

1 Publications



Basic Information

Catalog Number:

24383-1-AP

Size:

150ul, Concentration: 350 ug/ml by Nanodrop and 167 ug/ml by Bradford method using BSA as the standard;

Source:

Rabbit

Isotype:

IgG

Immunogen Catalog Number:

AG18294

GenBank Accession Number:

BC022348

GeneID (NCBI):

57698

UNIPROT ID:

A0MZ66

Full Name:

KIAA1598

Calculated MW:

72 kDa

Observed MW:

60-75 kDa

Purification Method:

Antigen affinity purification

Recommended Dilutions:

WB 1:500-1:3000

IHC 1:50-1:500

Applications

Tested Applications:

WB, IHC, ELISA

Cited Applications:

WB, IHC

Species Specificity:

human, mouse, rat

Cited Species:

human

Note-IHC: suggested antigen retrieval with TE buffer pH 9.0; (*) Alternatively, antigen retrieval may be performed with citrate buffer pH 6.0

Positive Controls:

WB : SH-SY5Y cells, Neuro-2a cells, rat brain tissue, SK-N-SH cells

IHC : human bowen disease,

Notable Publications

Author	Pubmed ID	Journal	Application
Yueying Wang	39260052	Cancer Genet	WB,IHC

Storage

Storage:

Store at -20°C. Stable for one year after shipment.

Storage Buffer:

PBS with 0.02% sodium azide and 50% glycerol

Aliquoting is unnecessary for -20°C storage

*** 20ul sizes contain 0.1% BSA

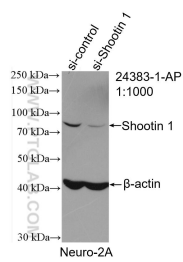
For technical support and original validation data for this product please contact:

T: 1 (888) 4PTGLAB (1-888-478-4522) (toll free in USA), or 1(312) 455-8498 (outside USA)

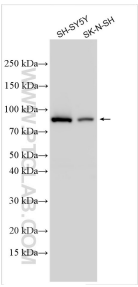
E: proteintech@ptglab.com
W: ptglab.com

This product is exclusively available under Proteintech Group brand and is not available to purchase from any other manufacturer.

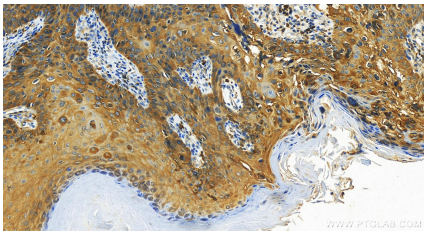
Selected Validation Data



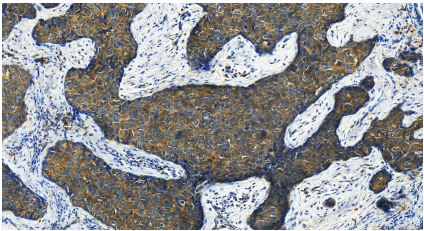
WB result of Shootin 1 antibody (24383-1-AP; 1:1000; incubated at room temperature for 1.5 hours) with sh-Control and sh-Shootin 1 transfected Neuro-2a cells.



Various lysates were subjected to SDS PAGE followed by western blot with 24383-1-AP (Shootin 1 antibody) at dilution of 1:1500 incubated at room temperature for 1.5 hours.



Immunohistochemical analysis of paraffin-embedded human bowen disease slide using 24383-1-AP (Shootin 1 antibody) at dilution of 1:200 (under 20x lens). Heat mediated antigen retrieval with Tris-EDTA buffer (pH 9.0).



Immunohistochemical analysis of paraffin-embedded human bowen disease slide using 24383-1-AP (Shootin 1 antibody) at dilution of 1:200 (under 20x lens). Heat mediated antigen retrieval with Tris-EDTA buffer (pH 9.0).