

For Research Use Only

# NCBP3 Polyclonal antibody

Catalog Number: 24384-1-AP **1 Publications**



## Basic Information

<b>Catalog Number:</b> 24384-1-AP	<b>GenBank Accession Number:</b> BC148856	<b>Purification Method:</b> Antigen affinity purification
<b>Size:</b> 150ul , Concentration: 400 µg/ml by Nanodrop and 280 µg/ml by Bradford method using BSA as the standard;	<b>GeneID (NCBI):</b> 55421	<b>Recommended Dilutions:</b> WB 1:1000-1:4000 IF 1:10-1:100
<b>Source:</b> Rabbit	<b>Full Name:</b> chromosome 17 open reading frame 85	
<b>Isotype:</b> IgG	<b>Calculated MW:</b> 620 aa, 70 kDa	
<b>Immunogen Catalog Number:</b> AG20021	<b>Observed MW:</b> 71-80 kDa	

## Applications

<b>Tested Applications:</b> IF, WB, ELISA	<b>Positive Controls:</b> WB : A549 cells, HeLa cells, Jurkat cells, PC-3 cells IF : HeLa cells,
<b>Cited Applications:</b> WB	
<b>Species Specificity:</b> human	
<b>Cited Species:</b> human	

## Background Information

chromosome 17 open reading frame 85(C17orf85)also named as Protein ELG is 620 amino acids protein, which is localizes in human chromosome 17. The function of protein is still non-known and it consists of some phosphorylation site . It may involves in human embryonic stem cell differentiation.

## Notable Publications

Author	Pubmed ID	Journal	Application
Xiwen Li	32618493	RNA Biol	WB

## Storage

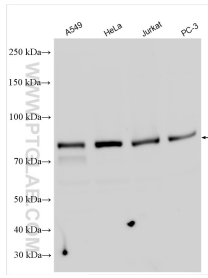
**Storage:**  
Store at -20°C. Stable for one year after shipment.  
**Storage Buffer:**  
PBS with 0.02% sodium azide and 50% glycerol pH 7.3.  
Aliquoting is unnecessary for -20°C storage

\*\*\* 20ul sizes contain 0.1% BSA

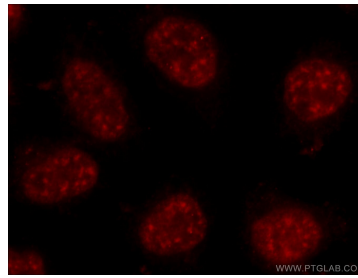
For technical support and original validation data for this product please contact:  
T: 1 (888) 4PTGLAB (1-888-478-4522) (toll free in USA), or 1(312) 455-8498 (outside USA)  
E: proteintech@ptglab.com  
W: ptglab.com

This product is exclusively available under Proteintech Group brand and is not available to purchase from any other manufacturer.

## Selected Validation Data



Various lysates were subjected to SDS PAGE followed by western blot with 24384-1-AP (NCBP3 antibody) at dilution of 1:2000 incubated at room temperature for 1.5 hours.



Immunofluorescent analysis of HeLa cells using 24384-1-AP (NCBP3 antibody) at dilution of 1:25 and Rhodamine-Goat anti-Rabbit IgG.