

For Research Use Only

# GPATCH4 Polyclonal antibody

Catalog Number: 24399-1-AP



## Basic Information

### Catalog Number:

24399-1-AP

### Size:

150ul, Concentration: 300 ug/ml by Nanodrop and 293 ug/ml by Bradford method using BSA as the standard;

### Source:

Rabbit

### Isotype:

IgG

### Immunogen Catalog Number:

AG20095

### GenBank Accession Number:

BC040147

### GeneID (NCBI):

54865

### UNIPROT ID:

Q5T3I0

### Full Name:

G patch domain containing 4

### Calculated MW:

446 aa, 50 kDa

### Observed MW:

50 kDa

### Purification Method:

Antigen affinity purification

### Recommended Dilutions:

WB 1:500-1:2000

IHC 1:20-1:200

IF/ICC 1:20-1:200

## Applications

### Tested Applications:

WB, IHC, IF/ICC, ELISA

### Species Specificity:

human, mouse, rat

**Note-IHC: suggested antigen retrieval with TE buffer pH 9.0; (\*) Alternatively, antigen retrieval may be performed with citrate buffer pH 6.0**

### Positive Controls:

WB : HEK-293 cells, mouse kidney tissue, rat kidney tissue

IHC : human liver tissue, human liver cancer tissue

IF/ICC : HEK-293 cells,

## Background Information

GPATCH4 (G patch domain-containing protein 4) is a 446 amino acid protein containing one G-patch domain. Existing as three alternatively spliced isoforms. This antibody is a rabbit polyclonal antibody raised against the 189 residues of N-terminal of human GPATCH4 protein

## Storage

### Storage:

Store at -20°C. Stable for one year after shipment.

### Storage Buffer:

PBS with 0.02% sodium azide and 50% glycerol pH 7.3.

Aliquoting is unnecessary for -20°C storage

\*\*\* 20ul sizes contain 0.1% BSA

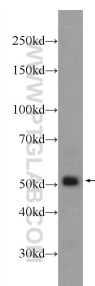
For technical support and original validation data for this product please contact:

T: 1 (888) 4PTGLAB (1-888-478-4522) (toll free in USA), or 1(312) 455-8498 (outside USA)

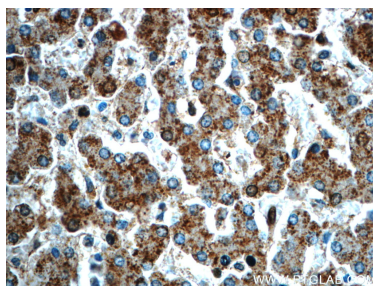
E: [proteintech@ptglab.com](mailto:proteintech@ptglab.com)  
W: [ptglab.com](http://ptglab.com)

This product is exclusively available under Proteintech Group brand and is not available to purchase from any other manufacturer.

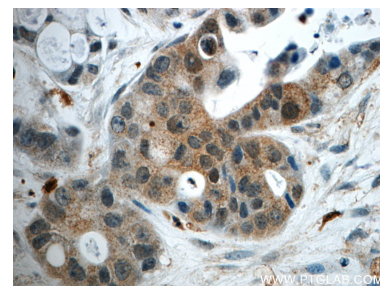
## Selected Validation Data



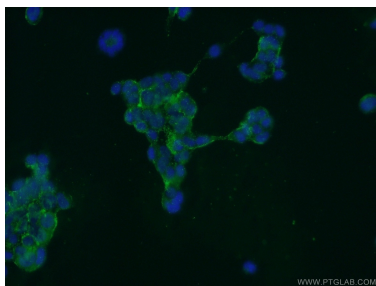
HEK-293 cells were subjected to SDS PAGE followed by western blot with 24399-1-AP (GPATCH4 Antibody) at dilution of 1:1000 incubated at room temperature for 1.5 hours.



Immunohistochemical analysis of paraffin-embedded human liver slide using 24399-1-AP (GPATCH4 Antibody) at dilution of 1:50.



Immunohistochemical analysis of paraffin-embedded human liver cancer slide using 24399-1-AP (GPATCH4 Antibody) at dilution of 1:50.



Immunofluorescent analysis of HEK-293 cells using 24399-1-AP (GPATCH4 antibody) at dilution of 1:50 and Alexa Fluor 488-conjugated AffiniPure Goat Anti-Rabbit IgG(H+L).