

For Research Use Only

# Collagen Type XXVIII Polyclonal antibody

Catalog Number: 24401-1-AP



## Basic Information

<b>Catalog Number:</b> 24401-1-AP	<b>GenBank Accession Number:</b> BC136892	<b>Purification Method:</b> Antigen affinity purification
<b>Size:</b> 150ul , Concentration: 900 ug/ml by Nanodrop;	<b>GeneID (NCBI):</b> 340267	<b>Recommended Dilutions:</b> WB 1:500-1:1000 IF/ICC 1:200-1:800
<b>Source:</b> Rabbit	<b>UNIPROT ID:</b> Q2UY09	
<b>Isotype:</b> IgG	<b>Full Name:</b> collagen, type XXVIII, alpha 1	
<b>Immunogen Catalog Number:</b> AG21459	<b>Calculated MW:</b> 1125 aa, 117 kDa	
	<b>Observed MW:</b> 72 kDa, 100-117 kDa	

## Applications

<b>Tested Applications:</b> WB, IF/ICC, ELISA	<b>Positive Controls:</b>
<b>Species Specificity:</b> human	<b>WB :</b> HEK-293 cells, HeLa cells <b>IF/ICC :</b> U2OS cells,

## Background Information

COL28A1 (collagen type XXVIII alpha 1 chain), also known as COL28. It is expected to be located in the basement membranes, cytoplasm and nucleus. And the protein is mainly expressed in salivary gland and adrenal. This antibody can recognize the 117 kDa and 72 kDa isoforms of target. COL28A1 is a new collagen that cannot clearly be assigned to any collagen subgroup, despite the fact that it contains VWA domains. Ongoing investigations will shed further light on the role of COL28A1 in the assembly of nerve fiber basement membranes. Although no human mutation has been associated with COL28A1, it is tempting to speculate that mutations in this gene would lead to neurodegenerative disease (PMID: 16330543).

## Storage

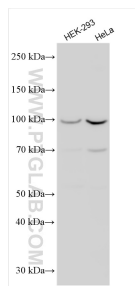
**Storage:**  
Store at -20°C. Stable for one year after shipment.  
**Storage Buffer:**  
PBS with 0.02% sodium azide and 50% glycerol pH 7.3.  
**Aliquoting is unnecessary for -20°C storage**

\*\*\* 20ul sizes contain 0.1% BSA

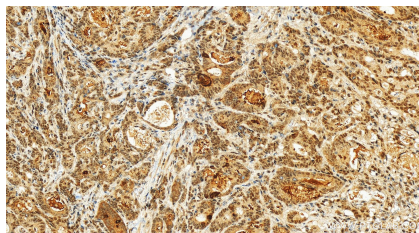
For technical support and original validation data for this product please contact:  
T: 1 (888) 4PTGLAB (1-888-478-4522) (toll free in USA), or 1(312) 455-8498 (outside USA)  
E: [proteintech@ptglab.com](mailto:proteintech@ptglab.com)  
W: [ptglab.com](http://ptglab.com)

This product is exclusively available under Proteintech Group brand and is not available to purchase from any other manufacturer.

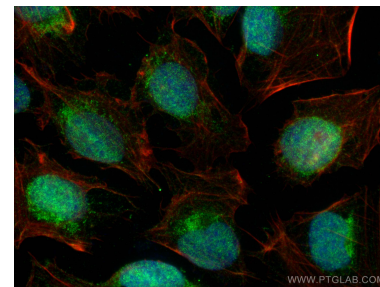
## Selected Validation Data



Various lysates were subjected to SDS PAGE followed by western blot with 24401-1-AP (Collagen Type XXVIII antibody) at dilution of 1:600 incubated at room temperature for 1.5 hours.



Immunohistochemical analysis of paraffin-embedded human stomach cancer tissue slide using 24401-1-AP (Collagen Type XXVIII antibody) at dilution of 1:200 (under 20x lens). Heat mediated antigen retrieval with Tris-EDTA buffer (pH 9.0).



Immunofluorescent analysis of (4% PFA) fixed U2OS cells using Collagen Type XXVIII antibody (24401-1-AP) at dilution of 1:400 and CoraLite®488-Conjugated Goat Anti-Rabbit IgG(H+L) (SA00013-2), CL594-phalloidin (red).