

For Research Use Only

# TRIM16 Polyclonal antibody

Catalog Number: 24403-1-AP

Featured Product

7 Publications



## Basic Information

<b>Catalog Number:</b> 24403-1-AP	<b>GenBank Accession Number:</b> BC015674	<b>Purification Method:</b> Antigen affinity purification
<b>Size:</b> 150ul, Concentration: 1000 µg/ml by Nanodrop and 380 µg/ml by Bradford method using BSA as the standard;	<b>GeneID (NCBI):</b> 10626	<b>Recommended Dilutions:</b> WB 1:500-1:1000 IP 0.5-4.0 ug for IP and 1:200-1:1000 for WB
<b>Source:</b> Rabbit	<b>Full Name:</b> tripartite motif-containing 16	<b>IHC 1:50-1:500</b> <b>IF 1:20-1:200</b>
<b>Isotype:</b> IgG	<b>Calculated MW:</b> 64 kDa	
<b>Immunogen Catalog Number:</b> AG21406	<b>Observed MW:</b> 64 kDa	

## Applications

<b>Tested Applications:</b> IF, IHC, IP, WB, ELISA	<b>Positive Controls:</b> WB : HepG2 cells, IP : HeLa cells, IHC : human testis tissue, human small intestine tissue IF : HepG2 cells,
<b>Cited Applications:</b> IF, IHC, WB	
<b>Species Specificity:</b> human	
<b>Cited Species:</b> human	
<b>Note-IHC: suggested antigen retrieval with TE buffer pH 9.0; (*) Alternatively, antigen retrieval may be performed with citrate buffer pH 6.0</b>	

## Background Information

### Notable Publications

Author	Pubmed ID	Journal	Application
Yi Zhao	33091421	Exp Cell Res	WB
Shuai Li	36450665	Cell Prolif	WB
Leilei Zheng	31812473	J Genet Genomics	WB,IHC

## Storage

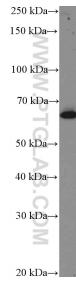
**Storage:**  
Store at -20°C. Stable for one year after shipment.  
**Storage Buffer:**  
PBS with 0.02% sodium azide and 50% glycerol pH 7.3.  
Aliquoting is unnecessary for -20°C storage

\*\*\* 20ul sizes contain 0.1% BSA

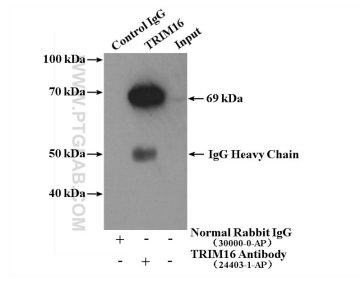
For technical support and original validation data for this product please contact:  
T: 1 (888) 4PTGLAB (1-888-478-4522) (toll free in USA), or 1(312) 455-8498 (outside USA)  
E: proteintech@ptglab.com  
W: ptglab.com

This product is exclusively available under Proteintech Group brand and is not available to purchase from any other manufacturer.

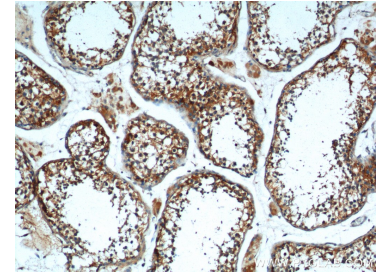
## Selected Validation Data



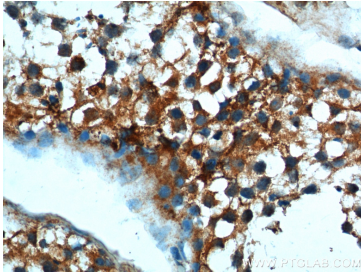
HepG2 cells were subjected to SDS PAGE followed by western blot with 24403-1-AP (TRIM16 Antibody) at dilution of 1:600 incubated at room temperature for 1.5 hours.



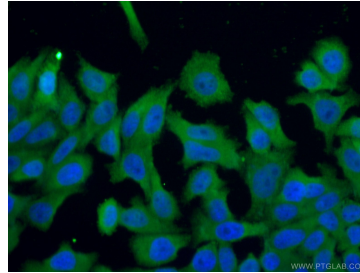
IP Result of anti-TRIM16 (IP:24403-1-AP, 4 $\mu$ g; Detection:24403-1-AP 1:300) with HeLa cells lysate 3960 $\mu$ g.



Immunohistochemical analysis of paraffin-embedded human testis tissue slide using 24403-1-AP (TRIM16 Antibody) at dilution of 1:200 (under 10x lens).



Immunohistochemical analysis of paraffin-embedded human testis tissue slide using 24403-1-AP (TRIM16 Antibody) at dilution of 1:200 (under 40x lens).



Immunofluorescent analysis of (4% PFA) fixed HepG2 cells using 24403-1-AP (TRIM16 antibody) at dilution of 1:50 and Alexa Fluor 488-conjugated AffiniPure Goat Anti-Rabbit IgG(H+L).