

For Research Use Only

DMXL1 Polyclonal antibody

Catalog Number: 24413-1-AP



Basic Information

Catalog Number: 24413-1-AP	GenBank Accession Number: BC150616	Purification Method: Antigen affinity purification
Size: 150ul , Concentration: 650 µg/ml by Nanodrop and 273 µg/ml by Bradford method using BSA as the standard;	GeneID (NCBI): 1657	Recommended Dilutions: IP 0.5-4.0 ug for IP and 1:1000-1:5000 for WB
Source: Rabbit	Full Name: Dmx-like 1	
Isotype: IgG	Calculated MW: 3027 aa, 338 kDa	
Immunogen Catalog Number: AG19846	Observed MW: 338 kDa	

Applications

Tested Applications: IP, ELISA	Positive Controls: IP : HEK-293 cells,
Species Specificity: human	

Background Information

DMXL1 is a member of the WD repeat superfamily of proteins, which have regulatory functions. DMXL1 is expressed in many tissue types including several types of eye tissue, and it has been associated with ocular phenotypes. In addition, it is upregulated in cultured cells that overexpress growth factor independence 1B, a transcription factor that is essential for hematopoietic cell development.

Storage

Storage:
Store at -20°C. Stable for one year after shipment.
Storage Buffer:
PBS with 0.02% sodium azide and 50% glycerol pH 7.3.
Aliquoting is unnecessary for -20°C storage

***** 20ul sizes contain 0.1% BSA**

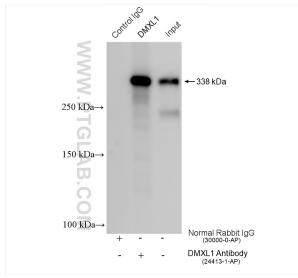
For technical support and original validation data for this product please contact:

T: 1 (888) 4PTGLAB (1-888-478-4522) (toll free in USA), or 1(312) 455-8498 (outside USA)

E: proteintech@ptglab.com
W: ptglab.com

This product is exclusively available under Proteintech Group brand and is not available to purchase from any other manufacturer.

Selected Validation Data



IP result of anti-DMXL1(IP:24413-1-AP, 4ug;
Detection:24413-1-AP 1:2500) with HEK-293 cells
lysate 960 ug.