

For Research Use Only

CHAT Polyclonal antibody, PBS Only

Catalog Number: 24418-1-PBS



Basic Information

Catalog Number:

24418-1-PBS

Size:

100ug, Concentration: 1mg/ml by Nanodrop;

Source:

Rabbit

Isotype:

IgG

Immunogen Catalog Number:

AG19550

GenBank Accession Number:

BC130617

GeneID (NCBI):

1103

UNIPROT ID:

P28329

Full Name:

choline acetyltransferase

Calculated MW:

748 aa, 83 kDa

Observed MW:

60-66 kDa, 45 kDa

Purification Method:

Antigen affinity purification

Applications

Tested Applications:

WB, IHC, IF-P, IP, ELISA

Species Specificity:

human, mouse, rat

Background Information

CHAT (choline acetyltransferase) belongs to the carnitine/choline acetyltransferase family. It catalyzes the reversible synthesis of acetylcholine (ACh) from acetyl CoA and choline at cholinergic synapses. Defects in CHAT are the cause of congenital myasthenic syndrome with episodic apnea (CMSEA). CHAT is known to be present exclusively in the cytoplasm of cholinergic neurons and anti-CHAT antibody has been considered as the best marker for cholinergic neurons. It has been observed that CHAT gene generates multiple mRNA splice variants, including peripheral type CHAT (pCHAT) and common type CHAT (cCHAT), encoding 40-55 kDa and 66-70 kDa forms of proteins, respectively.

Storage

Storage:

Store at -80°C.

Storage Buffer:

PBS only, pH7.3

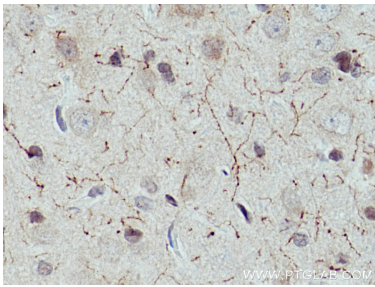
For technical support and original validation data for this product please contact:

T: 1 (888) 4PTGLAB (1-888-478-4522) (toll free in USA), or 1(312) 455-8498 (outside USA)

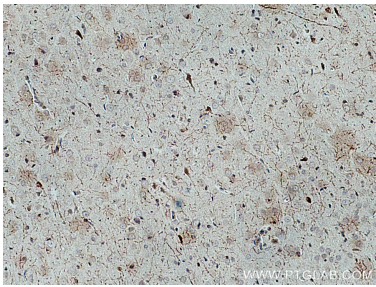
E: proteintech@ptglab.com
W: ptglab.com

This product is exclusively available under Proteintech Group brand and is not available to purchase from any other manufacturer.

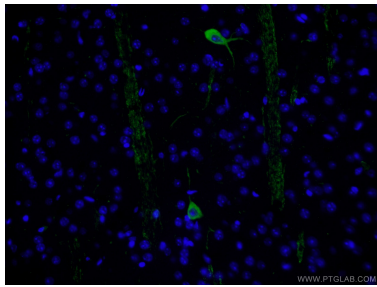
Selected Validation Data



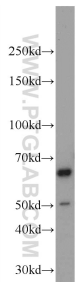
Immunohistochemical analysis of paraffin-embedded rat brain tissue slide using 24418-1-AP (CHAT antibody) at dilution of 1:200 (under 40x lens). Heat mediated antigen retrieval with Tris-EDTA buffer (pH 9.0). This data was developed using the same antibody clone with 24418-1-PBS in a different storage buffer formulation.



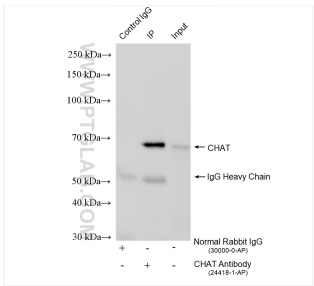
Immunohistochemical analysis of paraffin-embedded rat brain tissue slide using 24418-1-AP (CHAT antibody) at dilution of 1:200 (under 10x lens). Heat mediated antigen retrieval with Tris-EDTA buffer (pH 9.0). This data was developed using the same antibody clone with 24418-1-PBS in a different storage buffer formulation.



Immunofluorescent analysis of (4% PFA) fixed mouse brain tissue using 24418-1-AP (CHAT antibody) at dilution of 1:50 and Alexa Fluor 488-conjugated AffiniPure Goat Anti-Rabbit IgG(H+L). This data was developed using the same antibody clone with 24418-1-PBS in a different storage buffer formulation.



rat brain tissue were subjected to SDS PAGE followed by western blot with 24418-1-AP (CHAT Antibody) at dilution of 1:1000 incubated at room temperature for 1.5 hours. This data was developed using the same antibody clone with 24418-1-PBS in a different storage buffer formulation.



IP result of anti-CHAT (IP:24418-1-AP, 4ug; Detection:24418-1-AP 1:2000) with rat brain tissue lysate 1880 ug. This data was developed using the same antibody clone with 24418-1-PBS in a different storage buffer formulation.