

For Research Use Only

SPAG9 Polyclonal antibody

Catalog Number: 24423-1-AP



Basic Information

Catalog Number:

24423-1-AP

Size:

150ul, Concentration: 800 ug/ml by Nanodrop and 393 ug/ml by Bradford method using BSA as the standard;

Source:

Rabbit

Isotype:

IgG

Immunogen Catalog Number:

AG19763

GenBank Accession Number:

BC146755

GeneID (NCBI):

9043

UNIPROT ID:

O60271

Full Name:

sperm associated antigen 9

Calculated MW:

1321 aa, 146 kDa

Observed MW:

146 kDa

Purification Method:

Antigen affinity purification

Recommended Dilutions:

WB 1:2000-1:8000

IHC 1:50-1:500

IF/ICC 1:50-1:500

Applications

Tested Applications:

WB, IHC, IF/ICC, ELISA

Species Specificity:

human, mouse

Note-IHC: suggested antigen retrieval with TE buffer pH 9.0; (*) Alternatively, antigen retrieval may be performed with citrate buffer pH 6.0

Positive Controls:

WB : HEK-293 cells, HeLa cells, RAW 264.7 cells

IHC : human testis tissue,

IF/ICC : HeLa cells, RAW 264.7 cells

Storage

Storage:

Store at -20°C. Stable for one year after shipment.

Storage Buffer:

PBS with 0.02% sodium azide and 50% glycerol pH 7.3.

Aliquoting is unnecessary for -20°C storage

*** 20ul sizes contain 0.1% BSA

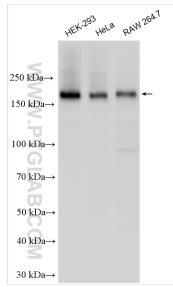
For technical support and original validation data for this product please contact:

T: 1 (888) 4PTGLAB (1-888-478-4522) (toll free in USA), or 1(312) 455-8498 (outside USA)

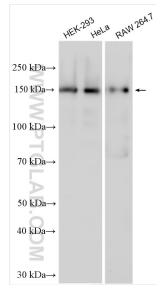
E: proteintech@ptglab.com
W: ptglab.com

This product is exclusively available under Proteintech Group brand and is not available to purchase from any other manufacturer.

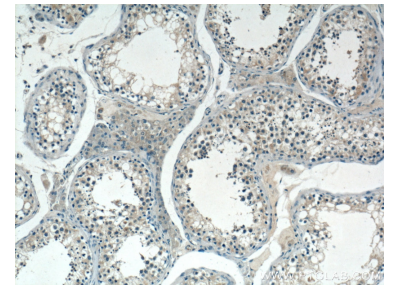
Selected Validation Data



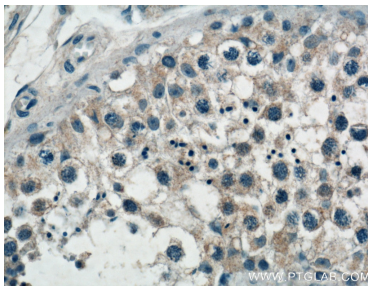
Various lysates were subjected to SDS PAGE followed by western blot with 24423-1-AP (SPAG9 antibody) at dilution of 1:2000 incubated at room temperature for 1.5 hours.



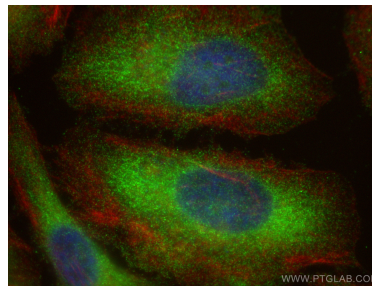
Various lysates were subjected to SDS PAGE followed by western blot with 24423-1-AP (SPAG9 antibody) at dilution of 1:8000 incubated at room temperature for 1.5 hours.



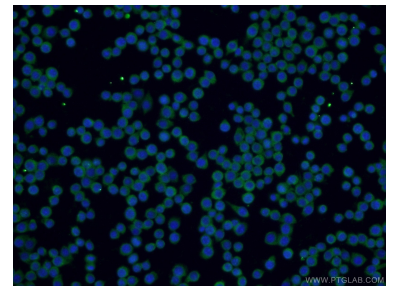
Immunohistochemical analysis of paraffin-embedded human testis tissue slide using 24423-1-AP (SPAG9 antibody) at dilution of 1:200 (under 10x lens).



Immunohistochemical analysis of paraffin-embedded human testis tissue slide using 24423-1-AP (SPAG9 antibody) at dilution of 1:200 (under 40x lens).



Immunofluorescent analysis of (-20°C Ethanol) fixed HeLa cells using SPAG9 antibody (24423-1-AP) at dilution of 1:200 and Multi-rAb Coralite® Plus 488-Goat Anti-Rabbit Recombinant Secondary Antibody (H+L) (RGAR002), CL594-Phalloidin (red).



Immunofluorescent analysis of RAW 264.7 cells using 24423-1-AP (SPAG9 antibody) at dilution of 1:50 and Alexa Fluor 488-conjugated AffiniPure Goat Anti-Rabbit IgG(H+L).