

For Research Use Only

PCMTD1 Polyclonal antibody

Catalog Number: 24425-1-AP



Basic Information

Catalog Number: 24425-1-AP	GenBank Accession Number: BC032670	Purification Method: Antigen affinity purification
Size: 150ul , Concentration: 750 ug/ml by Nanodrop;	GeneID (NCBI): 115294	Recommended Dilutions: WB 1:1000-1:10000 IF/ICC 1:50-1:500
Source: Rabbit	UNIPROT ID: Q96MG8	
Isotype: IgG	Full Name: protein-L-isoaspartate (D-aspartate) O-methyltransferase domain containing 1	
Immunogen Catalog Number: AG19634	Calculated MW: 357 aa, 41 kDa	
	Observed MW: 41 kDa, 27 kDa	

Applications

Tested Applications: WB, IF/ICC, ELISA	Positive Controls:
Species Specificity: human, mouse, rat	WB : rat liver tissue, human placenta tissue, hTERT-RPE1 cells, mouse eye tissue
	IF/ICC : HepG2 cells,

Background Information

Protein-L-isoaspartate O-methyltransferase domain-containing protein 1 (PCMTD1) is a putative E3 ubiquitin ligase substrate adaptor protein, which has a C-terminal domain containing SOCS-box ubiquitin ligase recruitment motifs. PCMTD1 protein may provide an alternate maintenance pathway for modified proteins in mammalian cells (PMID: 35486881). This antibody can detect two isoforms of PCMTD1, 27 kDa and 41 kDa respectively (PMID: 37953789, 35486881).

Storage

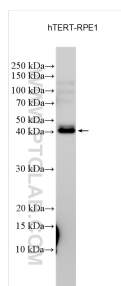
Storage:
Store at -20°C. Stable for one year after shipment.
Storage Buffer:
PBS with 0.02% sodium azide and 50% glycerol pH 7.3.
Aliquoting is unnecessary for -20°C storage

*** 20ul sizes contain 0.1% BSA

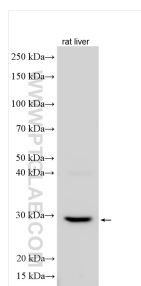
For technical support and original validation data for this product please contact:
T: 1 (888) 4PTGLAB (1-888-478-4522) (toll free in USA), or 1(312) 455-8498 (outside USA)
E: proteintech@ptglab.com
W: ptglab.com

This product is exclusively available under Proteintech Group brand and is not available to purchase from any other manufacturer.

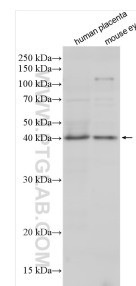
Selected Validation Data



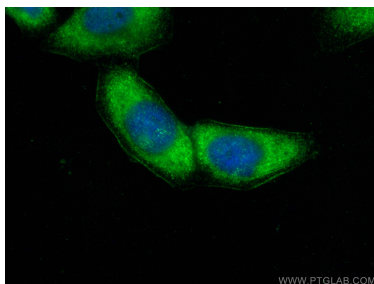
Various lysates were subjected to SDS PAGE followed by western blot with 24425-1-AP (PCMTD1 antibody) at dilution of 1:2000 incubated at room temperature for 1.5 hours.



Various lysates were subjected to SDS PAGE followed by western blot with 24425-1-AP (PCMTD1 antibody) at dilution of 1:6000 incubated at room temperature for 1.5 hours.



Various lysates were subjected to SDS PAGE followed by western blot with 24425-1-AP (PCMTD1 antibody) at dilution of 1:1000 incubated at room temperature for 1.5 hours.



Immunofluorescent analysis of (-20°C Ethanol) fixed HepG2 cells using PCMTD1 antibody (24425-1-AP) at dilution of 1:200 and CoraLite®488-Conjugated Goat Anti-Rabbit IgG(H+L).