

For Research Use Only

CEP135 Polyclonal antibody

Catalog Number: 24428-1-AP

12 Publications



Basic Information

Catalog Number:

24428-1-AP

Size:

150ul, Concentration: 500 ug/ml by Nanodrop;

Source:

Rabbit

Isotype:

IgG

Immunogen Catalog Number:

AG19122

GenBank Accession Number:

BC136535

GeneID (NCBI):

9662

UNIPROT ID:

Q66GS9

Full Name:

centrosomal protein 135kDa

Calculated MW:

1140 aa, 134 kDa

Observed MW:

135 kDa

Purification Method:

Antigen affinity purification

Recommended Dilutions:

WB: 1:1000-1:3000

IF/ICC: 1:50-1:500

Applications

Tested Applications:

WB, IF/ICC, ELISA

Cited Applications:

WB, IF

Species Specificity:

human, Canine

Cited Species:

human, mouse

Positive Controls:

WB : HeLa cells, K-562 cells, U2OS cells, U-87 MG cells

IF/ICC : MDCK cells,

Background Information

CEP135 is a 135 kDa centrosomal protein that is present in a wide range of organisms. CEP135 is located at the centrosome throughout the cell cycle, and localization is independent of the microtubule network. It distributes throughout the centrosomal area in association with the electron-dense material surrounding centrioles.

Notable Publications

Author	Pubmed ID	Journal	Application
Emmanuelle Steib	32946374	Elife	
Tianyu Wu	36395215	Science	IF
Hindol Gupta	32442461	Curr Biol	WB

Storage

Storage:

Store at -20°C. Stable for one year after shipment.

Storage Buffer:

PBS with 0.02% sodium azide and 50% glycerol, pH7.3

Aliquoting is unnecessary for -20°C storage

*** 20ul sizes contain 0.1% BSA

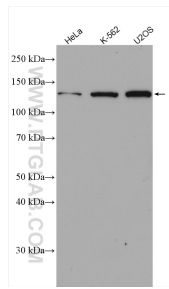
For technical support and original validation data for this product please contact:

T: 1 (888) 4PTGLAB (1-888-478-4522) (toll free in USA), or 1(312) 455-8498 (outside USA)

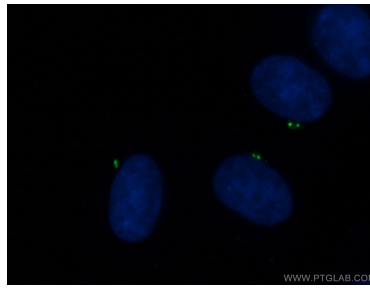
E: proteintech@ptglab.com
W: ptglab.com

This product is exclusively available under Proteintech Group brand and is not available to purchase from any other manufacturer.

Selected Validation Data



Various lysates were subjected to SDS PAGE followed by western blot with 24428-1-AP (CEP135 antibody) at dilution of 1:2500 incubated at room temperature for 1.5 hours.



Immunofluorescent analysis of (-20°C Ethanol) fixed MDCK cells using 24428-1-AP (CEP135 antibody) at dilution of 1:100 and Alexa Fluor 488-Conjugated Goat Anti-Rabbit IgG(H+L).