

For Research Use Only

RS1 Polyclonal antibody

Catalog Number: 24430-1-AP

2 Publications



Basic Information

Catalog Number: 24430-1-AP	GenBank Accession Number: BC141638	Purification Method: Antigen affinity purification
Size: 150ul , Concentration: 450 ug/ml by Nanodrop;	GeneID (NCBI): 6247	Recommended Dilutions: WB 1:2000-1:10000
Source: Rabbit	UNIPROT ID: O15537	IHC 1:50-1:500
Isotype: IgG	Full Name: retinoschisin 1	IF-P 1:50-1:500
Immunogen Catalog Number: AG18885	Calculated MW: 26 kDa	IF-Fro 1:50-1:500
	Observed MW: 26 kDa	

Applications

Tested Applications: WB, IHC, IF-P, IF-Fro, ELISA	Positive Controls: WB : rat retina tissue, mouse eye tissue
Cited Applications: WB, IF	IHC : mouse eye tissue,
Species Specificity: human, mouse, rat	IF-P : mouse eye tissue,
Cited Species: mouse	IF-Fro : mouse eye tissue,
Note-IHC: suggested antigen retrieval with TE buffer pH 9.0; (*) Alternatively, antigen retrieval may be performed with citrate buffer pH 6.0	

Background Information

RS1 is also named as XLRS1. RS1 can bind negatively charged membrane lipids, such as phosphatidylserine and phosphoinositides. RS1 is required for normal structure and function of the retina (PMID:19093009). It may play a role in cell-cell adhesion processes in the retina (PMID:27114531). RS1 is high expression in the retina (at protein level) (PMID:10915776, PMID:9326935). It is detected in the inner segment of the photoreceptors, the inner nuclear layer, the inner plexiform layer and the ganglion cell layer. At the macula, it is expressed in both the outer and inner nuclear layers and in the inner plexiform layer (PMID:10915776, PMID:10915776). And RS1 is undetectable in the inner plexiform layers and the inner nuclear layer (PMID:10915776)

Notable Publications

Author	Pubmed ID	Journal	Application
Yangyang Zheng	38661546	Hum Gene Ther	WB
Yan Sun	38333050	Biochem Biophys Rep	IF

Storage

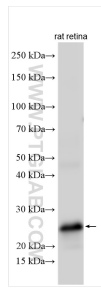
Storage:
Store at -20°C. Stable for one year after shipment.
Storage Buffer:
PBS with 0.02% sodium azide and 50% glycerol, pH7.3
Aliquoting is unnecessary for -20°C storage

*** 20ul sizes contain 0.1% BSA

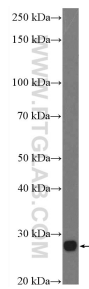
For technical support and original validation data for this product please contact:
T: 1 (888) 4PTGLAB (1-888-478-4522) (toll free in USA), or 1(312) 455-8498 (outside USA)
E: proteintech@ptglab.com
W: ptglab.com

This product is exclusively available under Proteintech Group brand and is not available to purchase from any other manufacturer.

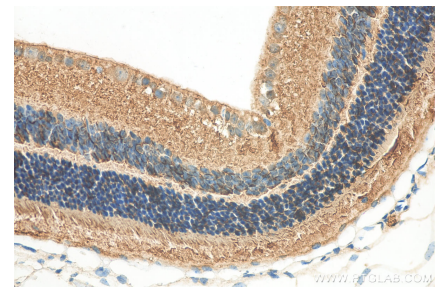
Selected Validation Data



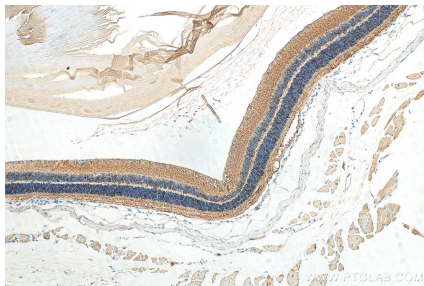
rat retina tissue were subjected to SDS PAGE followed by western blot with 24430-1-AP (RS1 antibody) at dilution of 1:5000 incubated at room temperature for 1.5 hours.



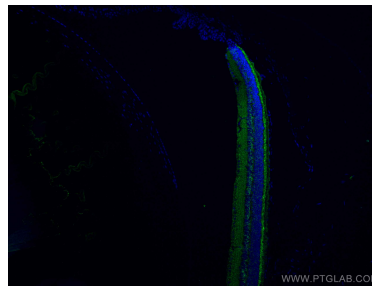
mouse eye tissue were subjected to SDS PAGE followed by western blot with 24430-1-AP (RS1 Antibody) at dilution of 1:600 incubated at room temperature for 1.5 hours.



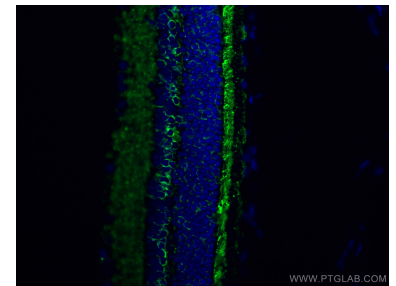
Immunohistochemical analysis of paraffin-embedded mouse eye tissue slide using 24430-1-AP (RS1 antibody) at dilution of 1:200 (under 40x lens). Heat mediated antigen retrieval with Tris-EDTA buffer (pH 9.0).



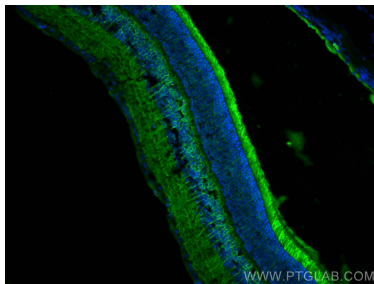
Immunohistochemical analysis of paraffin-embedded mouse eye tissue slide using 24430-1-AP (RS1 antibody) at dilution of 1:200 (under 10x lens). Heat mediated antigen retrieval with Tris-EDTA buffer (pH 9.0).



Immunofluorescent analysis of (4% PFA) fixed mouse eye tissue using RS1 antibody (24430-1-AP) at dilution of 1:200 and CoraLite®488-Conjugated AffiniPure Goat Anti-Rabbit IgG(H+L).



Immunofluorescent analysis of (4% PFA) fixed mouse eye tissue using RS1 antibody (24430-1-AP) at dilution of 1:200 and CoraLite®488-Conjugated AffiniPure Goat Anti-Rabbit IgG(H+L).



Immunofluorescent analysis of (4% PFA) fixed frozen OCT-embedded mouse eye tissue using 24430-1-AP (RS1 antibody) at dilution of 1:200 and CoraLite488-Conjugated AffiniPure Goat Anti-Rabbit IgG(H+L).