

For Research Use Only

L3MBTL2 Polyclonal antibody

Catalog Number: 24435-1-AP



Basic Information

Catalog Number: 24435-1-AP	GenBank Accession Number: BC017191	Purification Method: Antigen affinity purification
Size: 150ul , Concentration: 300 µg/ml by Nanodrop;	GeneID (NCBI): 83746	Recommended Dilutions: WB 1:500-1:2000
Source: Rabbit	Full Name: l(3)mbt-like 2 (Drosophila)	
Isotype: IgG	Calculated MW: 705 aa, 79 kDa	
Immunogen Catalog Number: AG19571	Observed MW: 95-100 kDa	

Applications

Tested Applications: WB, ELISA	Positive Controls: WB : U2OS cells,
Species Specificity: human	

Background Information

L3MBTL2 (Lethal (3) malignant brain tumor like 2) is a member of the MBT-domain proteins, which are involved in transcriptional repression and implicated in chromatin compaction. L3MBTL2 was most highly expressed in pachytene spermatocytes within the testis (PMID: 30760872). In addition, mutations in L3MBTL2 are prevalent in various cancers including leukemia, a disease characterized by alterations in multiple DNA repair proteins (PMID: 29581593).

Storage

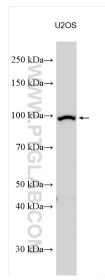
Storage:
Store at -20°C. Stable for one year after shipment.
Storage Buffer:
PBS with 0.02% sodium azide and 50% glycerol pH 7.3.
Aliquoting is unnecessary for -20°C storage

*** 20ul sizes contain 0.1% BSA

For technical support and original validation data for this product please contact:
T: 1 (888) 4PTGLAB (1-888-478-4522) (toll free in USA), or 1(312) 455-8498 (outside USA) E: proteintech@ptglab.com
W: ptglab.com

This product is exclusively available under Proteintech Group brand and is not available to purchase from any other manufacturer.

Selected Validation Data



Various lysates were subjected to SDS PAGE followed by western blot with 24435-1-AP (L3MBTL2 antibody) at dilution of 1:1000 incubated at room temperature for 1.5 hours.