

For Research Use Only

# BRIP1(N-terminal) Polyclonal antibody



Catalog Number: 24436-1-AP

Featured Product

1 Publications

## Basic Information

<b>Catalog Number:</b> 24436-1-AP	<b>GenBank Accession Number:</b> BC101472	<b>Purification Method:</b> Antigen affinity purification
<b>Size:</b> 150ul , Concentration: 1000 µg/ml by Nanodrop and 467 µg/ml by Bradford method using BSA as the standard;	<b>GeneID (NCBI):</b> 83990	<b>Recommended Dilutions:</b> WB 1:500-1:1000 IF 1:50-1:500
<b>Source:</b> Rabbit	<b>Full Name:</b> BRCA1 interacting protein C-terminal helicase 1	
<b>Isotype:</b> IgG	<b>Calculated MW:</b> 1249 aa, 141 kDa	
<b>Immunogen Catalog Number:</b> AG19907	<b>Observed MW:</b> 100 kDa	

## Applications

<b>Tested Applications:</b> IF, WB, ELISA	<b>Positive Controls:</b> WB : mouse testis tissue, HeLa cells
<b>Cited Applications:</b> WB	<b>IF :</b> HeLa cells,
<b>Species Specificity:</b> human, mouse	
<b>Cited Species:</b> human	

## Background Information

BRIP1 also named as BACH1, FANCI or ATP dependent RNA helicase BRIP1 is a 1249 amino acid protein, which contains one helicase ATP-binding domain and belongs to the DEAD box helicase family, DEAH subfamily. BRIP1 contains nuclear localization signal and is ubiquitously expressed with highest levels in testis, an expression pattern similar to that of BRCA1. BRIP1 is required to resolve the secondary structures of guanine-rich DNA that occasionally form during lagging-strand DNA synthesis.

## Notable Publications

Author	Pubmed ID	Journal	Application
Jiao Zhao	35597237	Mol Cell	WB

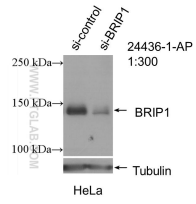
## Storage

**Storage:**  
Store at -20°C. Stable for one year after shipment.  
**Storage Buffer:**  
PBS with 0.02% sodium azide and 50% glycerol pH 7.3.  
Aliquoting is unnecessary for -20°C storage

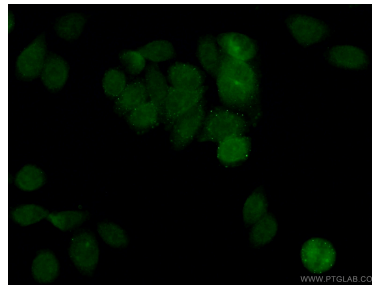
For technical support and original validation data for this product please contact:  
T: 1 (888) 4PTGLAB (1-888-478-4522) (toll free in USA), or 1(312) 455-8498 (outside USA)  
E: proteintech@ptglab.com  
W: ptglab.com

This product is exclusively available under Proteintech Group brand and is not available to purchase from any other manufacturer.

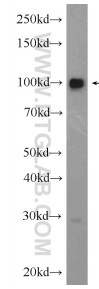
## Selected Validation Data



WB result of BRIP1(N-terminal) antibody (24436-1-AP; 1:300; incubated at room temperature for 1.5 hours) with sh-Control and sh-BRIP1(N-terminal) transfected HeLa cells.



Immunofluorescent analysis of (4% PFA) fixed HeLa cells using 24436-1-AP (BRIP1(N-terminal) antibody) at dilution of 1:50 and CoraLite488-Conjugated AffiniPure Goat Anti-Rabbit IgG(H+L).



mouse testis tissue were subjected to SDS PAGE followed by western blot with 24436-1-AP (BRIP1 Antibody) at dilution of 1:600 incubated at room temperature for 1.5 hours.