

For Research Use Only

# RCCD1 Polyclonal antibody

Catalog Number: 24446-1-AP



## Basic Information

<b>Catalog Number:</b> 24446-1-AP	<b>GenBank Accession Number:</b> BC140708	<b>Purification Method:</b> Antigen affinity purification
<b>Size:</b> 150ul, Concentration: 450 µg/ml by Nanodrop;	<b>GeneID (NCBI):</b> 91433	<b>Recommended Dilutions:</b> WB 1:500-1:2000
<b>Source:</b> Rabbit	<b>Full Name:</b> RCC1 domain containing 1	
<b>Isotype:</b> IgG	<b>Calculated MW:</b> 376 aa, 40 kDa	
<b>Immunogen Catalog Number:</b> AG19685	<b>Observed MW:</b> 40 kDa	

## Applications

<b>Tested Applications:</b> WB, ELISA	<b>Positive Controls:</b> WB: A549 cells, HeLa cells, Jurkat cells
<b>Species Specificity:</b> human	

## Background Information

RCCD1 is a new member of the large, phylogenetically conserved, RCC1 superfamily. Many RCC1 superfamily proteins have been linked to several human diseases, including cancer. RCCD1 was reported as a partner of histone H3K36 demethylase KDM8 involved in chromosome segregation, and has been identified as a potential driver for breast cancer. RCCD1 plays a role in regulating alpha-tubulin deacetylation and cytoskeletal microtubule stability, thereby promoting cell migration and TGF-beta-induced epithelial-to-mesenchymal transition (EMT), potentially through the inhibition of KDM8.

## Storage

**Storage:**  
Store at -20°C. Stable for one year after shipment.  
**Storage Buffer:**  
PBS with 0.02% sodium azide and 50% glycerol pH 7.3.  
Aliquoting is unnecessary for -20°C storage

\*\*\* 20ul sizes contain 0.1% BSA

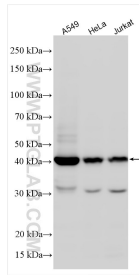
For technical support and original validation data for this product please contact:

T: 1 (888) 4PTGLAB (1-888-478-4522) (toll free in USA), or 1(312) 455-8498 (outside USA)

E: [proteintech@ptglab.com](mailto:proteintech@ptglab.com)  
W: [ptglab.com](http://ptglab.com)

This product is exclusively available under Proteintech Group brand and is not available to purchase from any other manufacturer.

## Selected Validation Data



Various lysates were subjected to SDS PAGE followed by western blot with 24446-1-AP (RCCD1 antibody) at dilution of 1:1000 incubated at room temperature for 1.5 hours.