

For Research Use Only

# RCCD1 Polyclonal antibody, PBS Only

Catalog Number: 24446-1-PBS



## Basic Information

Catalog Number:

24446-1-PBS

Size:

100ug, Concentration: 1 mg/ml by Nanodrop;

Source:

Rabbit

Isotype:

IgG

Immunogen Catalog Number:

AG19685

GenBank Accession Number:

BC140708

GeneID (NCBI):

91433

UNIPROT ID:

A6NED2

Full Name:

RCC1 domain containing 1

Calculated MW:

376 aa, 40 kDa

Observed MW:

40 kDa

Purification Method:

Antigen affinity purification

## Applications

Tested Applications:

WB, IHC, Indirect ELISA

Species Specificity:

human

## Background Information

RCCD1 is a new member of the large, phylogenetically conserved, RCC1 superfamily. Many RCC1 superfamily proteins have been linked to several human diseases, including cancer. RCCD1 was reported as a partner of histone H3K36 demethylase KDM8 involved in chromosome segregation, and has been identified as a potential driver for breast cancer. RCCD1 plays a role in regulating alpha-tubulin deacetylation and cytoskeletal microtubule stability, thereby promoting cell migration and TGF-beta-induced epithelial-to-mesenchymal transition (EMT), potentially through the inhibition of KDM8.

## Storage

Storage:

Store at -80°C.

Storage Buffer:

PBS Only

For technical support and original validation data for this product please contact:

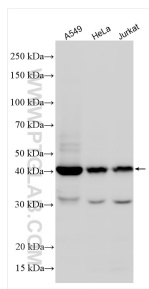
T: 1 (888) 4PTGLAB (1-888-478-4522) (toll free in USA), or 1(312) 455-8498 (outside USA)

E: [proteintech@ptglab.com](mailto:proteintech@ptglab.com)

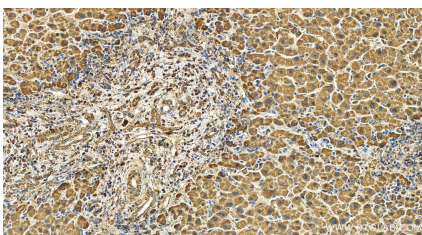
W: [ptglab.com](http://ptglab.com)

This product is exclusively available under Proteintech Group brand and is not available to purchase from any other manufacturer.

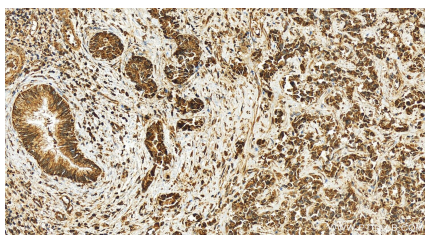
## Selected Validation Data



Various lysates were subjected to SDS PAGE followed by western blot with 24446-1-AP (RCCD1 antibody) at dilution of 1:1000 incubated at room temperature for 1.5 hours. This data was developed using the same antibody clone with 24446-1-PBS in a different storage buffer formulation.



Immunohistochemical analysis of paraffin-embedded human intrahepatic cholangiocarcinoma tissue slide using 24446-1-AP (RCCD1 antibody) at dilution of 1:50 (under 20x lens). Heat mediated antigen retrieval with Tris-EDTA buffer (pH 9.0). This data was developed using the same antibody clone with 24446-1-PBS in a different storage buffer formulation.



Immunohistochemical analysis of paraffin-embedded human intrahepatic cholangiocarcinoma tissue slide using 24446-1-AP (RCCD1 antibody) at dilution of 1:50 (under 20x lens). Heat mediated antigen retrieval with Tris-EDTA buffer (pH 9.0). This data was developed using the same antibody clone with 24446-1-PBS in a different storage buffer formulation.