

For Research Use Only

PPP1R10 Polyclonal antibody

Catalog Number: 24450-1-AP

1 Publications



Basic Information

Catalog Number:

24450-1-AP

Size:

150ul , Concentration: 350 ug/ml by Nanodrop and 247 ug/ml by Bradford method using BSA as the standard;

Source:

Rabbit

Isotype:

IgG

Immunogen Catalog Number:

AG20091

GenBank Accession Number:

BC150310

GeneID (NCBI):

5514

UNIPROT ID:

Q96QCO

Full Name:

protein phosphatase 1, regulatory (inhibitor) subunit 10

Calculated MW:

940 aa, 99 kDa

Observed MW:

99 kDa

Purification Method:

Antigen affinity purification

Recommended Dilutions:

WB 1:200-1:1000

IF/ICC 1:50-1:500

Applications

Tested Applications:

WB, IF/ICC, ELISA

Species Specificity:

human

Positive Controls:

WB : HepG2 cells,

IF/ICC : HepG2 cells,

Notable Publications

Author	Pubmed ID	Journal	Application
Simon Grelet	28825698	Nat Cell Biol	

Storage

Storage:

Store at -20°C. Stable for one year after shipment.

Storage Buffer:

PBS with 0.02% sodium azide and 50% glycerol pH 7.3.

Aliquoting is unnecessary for -20°C storage

*** 20ul sizes contain 0.1% BSA

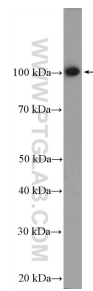
For technical support and original validation data for this product please contact:

T: 1 (888) 4PTGLAB (1-888-478-4522) (toll free in USA), or 1(312) 455-8498 (outside USA)

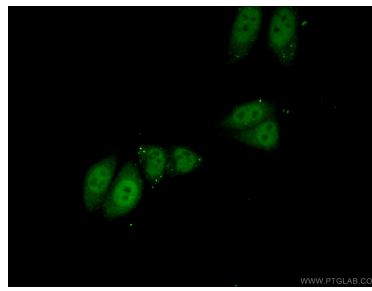
E: proteintech@ptglab.com
W: ptglab.com

This product is exclusively available under Proteintech Group brand and is not available to purchase from any other manufacturer.

Selected Validation Data



HepG2 cells were subjected to SDS PAGE followed by western blot with 24450-1-AP (PPP1R10 Antibody) at dilution of 1:300 incubated at room temperature for 1.5 hours.



Immunofluorescent analysis of (10% Formaldehyde) fixed HepG2 cells using 24450-1-AP (PPP1R10 antibody) at dilution of 1:50 and Alexa Fluor 488-conjugated Goat Anti-Rabbit IgG(H+L).