

For Research Use Only

# TBC1D2B Polyclonal antibody, PBS Only

Catalog Number: 24462-1-PBS



## Basic Information

Catalog Number:

24462-1-PBS

Size:

100ug, Concentration: 1 mg/ml by Nanodrop;

Source:

Rabbit

Isotype:

IgG

Immunogen Catalog Number:

AG19632

GenBank Accession Number:

BC152465

GeneID (NCBI):

23102

UNIPROT ID:

Q9UPU7

Full Name:

TBC1 domain family, member 2B

Calculated MW:

963 aa, 110 kDa

Observed MW:

120-125 kDa

Purification Method:

Antigen affinity purification

## Applications

Tested Applications:

WB, IP, Indirect ELISA

Species Specificity:

human, mouse

## Background Information

TBC1 domain family member 2B (TBC1D2B) contains a functional canonical LIR motif and acts at an early stage of autophagy by binding to both LC3/GABARAP and ATG12 conjugation complexes (PMID: 38226533). When there is a high protein level of RAB22A on early endosome, TBC1D2B is recruited and acts as a brake to prevent early endosomes from maturing into late endosomes (PMID: 39051763).

## Storage

Storage:

Store at -80°C.

Storage Buffer:

PBS only, pH7.3

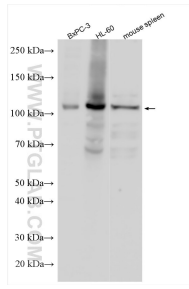
For technical support and original validation data for this product please contact:

T: 1 (888) 4PTGLAB (1-888-478-4522) (toll free in USA), or 1(312) 455-8498 (outside USA)

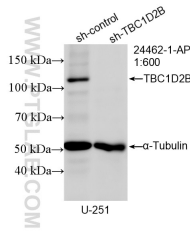
E: [proteintech@ptglab.com](mailto:proteintech@ptglab.com)  
W: [ptglab.com](http://ptglab.com)

This product is exclusively available under Proteintech Group brand and is not available to purchase from any other manufacturer.

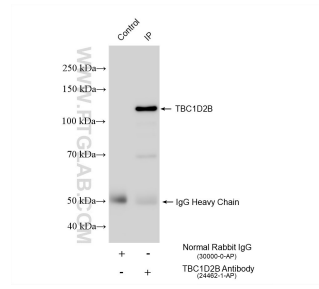
## Selected Validation Data



Various lysates were subjected to SDS PAGE followed by western blot with 24462-1-AP (TBC1D2B antibody) at dilution of 1:600 incubated at room temperature for 1.5 hours. This data was developed using the same antibody clone with 24462-1-PBS in a different storage buffer formulation.



WB result of TBC1D2B antibody (24462-1-AP; 1:600; incubated at room temperature for 1.5 hours) with sh-Control and sh-TBC1D2B transfected U-251 cells. This data was developed using the same antibody clone with 24462-1-PBS in a different storage buffer formulation.



IP result of anti-TBC1D2B (IP:24462-1-AP, 4ug; Detection:24462-1-AP 1:600) with BxPC-3 cells lysate 1200 ug. This data was developed using the same antibody clone with 24462-1-PBS in a different storage buffer formulation.