

For Research Use Only

# GEF-H1 Polyclonal antibody

Catalog Number: 24472-1-AP **1 Publications**



## Basic Information

<b>Catalog Number:</b> 24472-1-AP	<b>GenBank Accession Number:</b> BC020567	<b>Purification Method:</b> Antigen affinity purification
<b>Size:</b> 150ul , Concentration: 1000 µg/ml by Nanodrop;	<b>GeneID (NCBI):</b> 9181	<b>Recommended Dilutions:</b> WB 1:500-1:2000 IHC 1:50-1:500 IF 1:200-1:800
<b>Source:</b> Rabbit	<b>Full Name:</b> rho/rac guanine nucleotide exchange factor (GEF) 2	
<b>Isotype:</b> IgG	<b>Calculated MW:</b> 112 kDa	
<b>Immunogen Catalog Number:</b> AG13352	<b>Observed MW:</b> 111 kDa	

## Applications

<b>Tested Applications:</b> FC, IF, IHC, WB, ELISA	<b>Positive Controls:</b> WB : A431 cells, HEK-293T cells, HeLa cells, PC-3 cells IHC : human breast cancer tissue, human stomach cancer tissue IF : HepG2 cells, MCF-7 cells, HeLa cells
<b>Cited Applications:</b> IHC, WB	
<b>Species Specificity:</b> human	
<b>Cited Species:</b> human	

**Note-IHC: suggested antigen retrieval with TE buffer pH 9.0; (\*) Alternatively, antigen retrieval may be performed with citrate buffer pH 6.0**

## Background Information

### Notable Publications

Author	Pubmed ID	Journal	Application
J J David Ho	34644561	Cell Rep	WB,IHC

## Storage

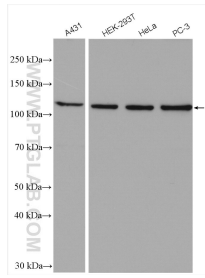
**Storage:**  
Store at -20°C. Stable for one year after shipment.  
**Storage Buffer:**  
PBS with 0.02% sodium azide and 50% glycerol pH 7.3.  
Aliquoting is unnecessary for -20°C storage

\*\*\* 20ul sizes contain 0.1% BSA

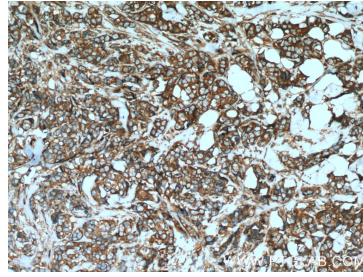
For technical support and original validation data for this product please contact:  
T: 1 (888) 4PTGLAB (1-888-478-4522) (toll free in USA), or 1(312) 455-8498 (outside USA)  
E: proteintech@ptglab.com  
W: ptglab.com

This product is exclusively available under Proteintech Group brand and is not available to purchase from any other manufacturer.

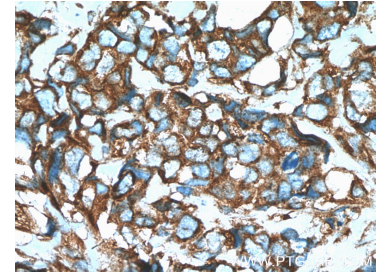
## Selected Validation Data



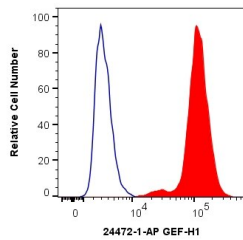
Various lysates were subjected to SDS PAGE followed by western blot with 24472-1-AP (GEF-H1 antibody) at dilution of 1:1000 incubated at room temperature for 1.5 hours.



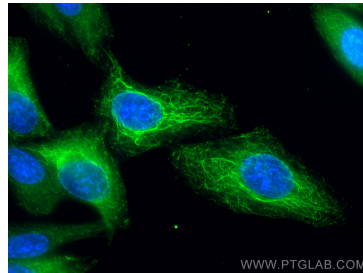
Immunohistochemical analysis of paraffin-embedded human breast cancer tissue slide using 24472-1-AP (GEF-H1 Antibody) at dilution of 1:200 (under 10x lens). Heat mediated antigen retrieval with Tris-EDTA buffer (pH 9.0).



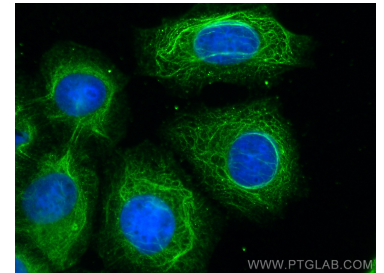
Immunohistochemical analysis of paraffin-embedded human breast cancer tissue slide using 24472-1-AP (GEF-H1 Antibody) at dilution of 1:200 (under 40x lens). Heat mediated antigen retrieval with Tris-EDTA buffer (pH 9.0).



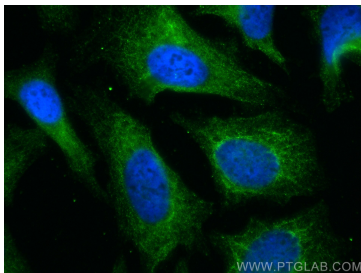
$1 \times 10^6$  HEK-293T cells were intracellularly stained with 0.4 ug Anti-Human GEF-H1 (24472-1-AP) and CoraLite®488-Conjugated AffiniPure Goat Anti-Rabbit IgG(H+L) at dilution 1:1000 (red), or 0.4 ug Isotype Control. Cells were fixed with 4% PFA and permeabilized with Flow Cytometry Perm Buffer (PF00011-C).



Immunofluorescent analysis of (-20°C Ethanol) fixed HepG2 cells using GEF-H1 antibody (24472-1-AP) at dilution of 1:400 and CoraLite®488-Conjugated AffiniPure Goat Anti-Rabbit IgG(H+L).



Immunofluorescent analysis of (-20°C Methanol) fixed MCF-7 cells using GEF-H1 antibody (24472-1-AP) at dilution of 1:400 and CoraLite®488-Conjugated AffiniPure Goat Anti-Rabbit IgG(H+L).



Immunofluorescent analysis of (-20°C Ethanol) fixed HeLa cells using GEF-H1 antibody (24472-1-AP) at dilution of 1:400 and CoraLite®488-Conjugated AffiniPure Goat Anti-Rabbit IgG(H+L).