

For Research Use Only

PRPF39 Polyclonal antibody

Catalog Number: 24480-1-AP



Basic Information

Catalog Number: 24480-1-AP	GenBank Accession Number: BC125126	Purification Method: Antigen affinity purification
Size: 150ul , Concentration: 750 µg/ml by Nanodrop and 380 µg/ml by Bradford method using BSA as the standard;	GeneID (NCBI): 55015	Recommended Dilutions: WB 1:500-1:2000 IHC 1:200-1:800
Source: Rabbit	Full Name: PRP39 pre-mRNA processing factor 39 homolog (<i>S. cerevisiae</i>)	
Isotype: IgG	Calculated MW: 669 aa, 78 kDa	
Immunogen Catalog Number: AG21683	Observed MW: 75-85 kDa	

Applications

Tested Applications: IHC, WB, ELISA	Positive Controls: WB : K-562 cells, COLO 320 cells, Raji cells
Species Specificity: human	IHC : human testis tissue,

Note-IHC: suggested antigen retrieval with TE buffer pH 9.0; (*) Alternatively, antigen retrieval may be performed with citrate buffer pH 6.0

Background Information

PRPF39 also termed as Pre mRNA processing factor 39 or PRP39 homolog is a 669 amino acid protein, which contains 7 HAT repeats and belongs to the PRP39 family. PRPF39 localizes in nucleus and may play a role in mRNA splicing.

Storage

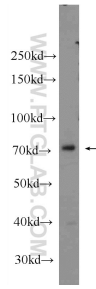
Storage:
Store at -20°C. Stable for one year after shipment.
Storage Buffer:
PBS with 0.02% sodium azide and 50% glycerol pH 7.3.
Aliquoting is unnecessary for -20°C storage

*** 20ul sizes contain 0.1% BSA

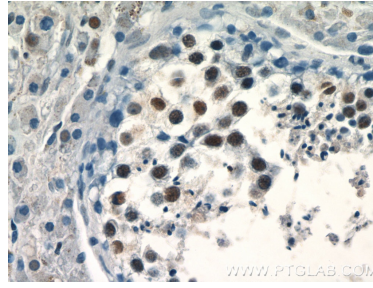
For technical support and original validation data for this product please contact:
T: 1 (888) 4PTGLAB (1-888-478-4522) (toll free in USA), or 1(312) 455-8498 (outside USA)
E: proteintech@ptglab.com
W: ptglab.com

This product is exclusively available under Proteintech Group brand and is not available to purchase from any other manufacturer.

Selected Validation Data



K-562 cells were subjected to SDS PAGE followed by western blot with 24480-1-AP (PRPF39 Antibody) at dilution of 1:1000 incubated at room temperature for 1.5 hours.



Immunohistochemical analysis of paraffin-embedded human testis tissue slide using 24480-1-AP (PRPF39 Antibody) at dilution of 1:400 (under 40x lens).