

For Research Use Only

AMZ1 Polyclonal antibody

Catalog Number: 24484-1-AP



Basic Information

| | | |
|--|--|--|
| Catalog Number: 24484-1-AP | GenBank Accession Number: BC146753 | Purification Method: Antigen affinity purification |
| Size: 150ul , Concentration: 900 ug/ml by Nanodrop and 433 ug/ml by Bradford method using BSA as the standard; | GeneID (NCBI): 155185 | Recommended Dilutions: WB 1:500-1:2000 |
| Source: Rabbit | UNIPROT ID: Q400G9 | IHC 1:20-1:200 |
| Isotype: IgG | Full Name: archaelysin family metallopeptidase 1 | IF/ICC 1:50-1:500 |
| Immunogen Catalog Number: AG20248 | Calculated MW: 498 aa, 55 kDa | |
| | Observed MW: 33 kDa, 28 kDa | |

Applications

| | |
|--|--|
| Tested Applications: WB, IHC, IF/ICC, ELISA | Positive Controls: |
| Species Specificity: human, mouse, rat | WB : mouse liver tissue, mouse brain tissue, rat brain tissue |
| Note-IHC: suggested antigen retrieval with TE buffer pH 9.0; (*) Alternatively, antigen retrieval may be performed with citrate buffer pH 6.0 | IHC : human heart tissue, |
| | IF/ICC : HepG2 cells, |

Background Information

AMZ1, also named as KIAA1950, is a new human Zinc metalloproteases. It exhibits aminopeptidase activity against neurogranin in vitro. AMZ1 does not hydrolyze angiotensin-2. It is mainly detected in liver and heart. AMZ1 has some isoforms with MW 55 kDa, 33 kDa, 30 kDa and 28 kDa.

Storage

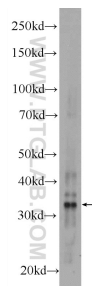
Storage:
Store at -20°C. Stable for one year after shipment.
Storage Buffer:
PBS with 0.02% sodium azide and 50% glycerol pH 7.3.
Aliquoting is unnecessary for -20°C storage

*** 20ul sizes contain 0.1% BSA

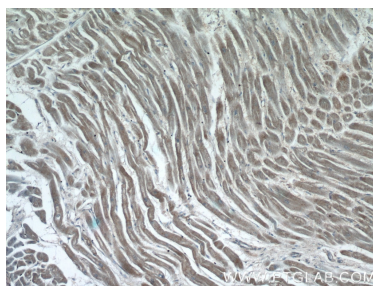
For technical support and original validation data for this product please contact:
T: 1 (888) 4PTGLAB (1-888-478-4522) (toll free in USA), or 1(312) 455-8498 (outside USA)
E: proteintech@ptglab.com
W: ptglab.com

This product is exclusively available under Proteintech Group brand and is not available to purchase from any other manufacturer.

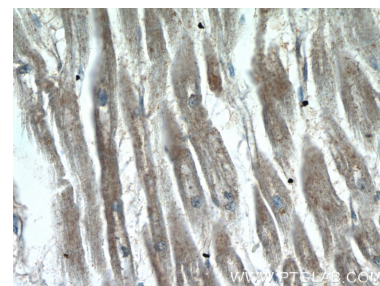
Selected Validation Data



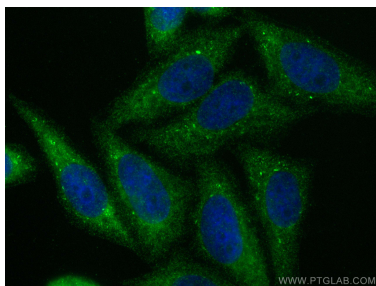
mouse liver tissue were subjected to SDS PAGE followed by western blot with 24484-1-AP (AMZ1 Antibody) at dilution of 1:1000 incubated at room temperature for 1.5 hours.



Immunohistochemical analysis of paraffin-embedded human heart tissue slide using 24484-1-AP (AMZ1 Antibody) at dilution of 1:50 (under 10x lens).



Immunohistochemical analysis of paraffin-embedded human heart tissue slide using 24484-1-AP (AMZ1 Antibody) at dilution of 1:50 (under 40x lens).



Immunofluorescent analysis of (-20°C Ethanol) fixed HepG2 cells using AMZ1 antibody (24484-1-AP) at dilution of 1:200 and CoraLite®488-Conjugated Goat Anti-Rabbit IgG(H+L) (SA00013-2).