

For Research Use Only

IL-17B Polyclonal antibody

Catalog Number: 24495-1-AP



Basic Information

Catalog Number:

24495-1-AP

Size:

150ul, Concentration: 400 ug/ml by Nanodrop;

Source:

Rabbit

Isotype:

IgG

Immunogen Catalog Number:

AG21453

GenBank Accession Number:

BC113925

GeneID (NCBI):

27190

UNIPROT ID:

Q9UHF5

Full Name:

interleukin 17B

Calculated MW:

180 aa, 20 kDa

Observed MW:

24 kDa

Purification Method:

Antigen affinity purification

Recommended Dilutions:

WB 1:500-1:3000

Applications

Tested Applications:

WB, ELISA

Species Specificity:

human

Positive Controls:

WB : Daudi cells, HeLa cells, MOLT-4 cells

Background Information

The interleukin (IL)-17 superfamily, a relatively new family of cytokines, consists of six ligands (from IL-17A to IL-17F), which bind to five receptor subtypes (from IL-17RA to IL-17RE) and induce downstream signaling. IL-17B was originally described as increased during intestinal inflammation. Moreover, it stimulates TNF- α and IL-1 β production by the human monocytic leukemia THP-1 cells and promotes neutrophil migration upon intraperitoneal administration, suggesting a pro-inflammatory role. More recent findings strongly suggest a role for the IL-17B/IL-17RB pathway in tumorigenesis.

Storage

Storage:

Store at -20°C. Stable for one year after shipment.

Storage Buffer:

PBS with 0.02% sodium azide and 50% glycerol pH 7.3.

Aliquoting is unnecessary for -20°C storage

*** 20ul sizes contain 0.1% BSA

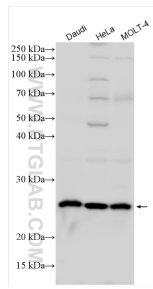
For technical support and original validation data for this product please contact:

T: 1 (888) 4PTGLAB (1-888-478-4522) (toll free in USA), or 1(312) 455-8498 (outside USA)

E: proteintech@ptglab.com
W: ptglab.com

This product is exclusively available under Proteintech Group brand and is not available to purchase from any other manufacturer.

Selected Validation Data



Various lysates were subjected to SDS PAGE followed by western blot with 24495-1-AP (IL-17B antibody) at dilution of 1:1500 incubated at room temperature for 1.5 hours.