

For Research Use Only

Somatostatin (1-116aa) Polyclonal antibody

Catalog Number: 24496-1-AP



Basic Information

Catalog Number: 24496-1-AP	GenBank Accession Number: BC032625	Purification Method: Antigen affinity purification
Size: 150ul , Concentration: 800 ug/ml by Nanodrop;	GeneID (NCBI): 6750	Recommended Dilutions: IHC 1:4000-1:16000 IF-P 1:50-1:500
Source: Rabbit	UNIPROT ID: P61278	
Isotype: IgG	Full Name: somatostatin	
Immunogen Catalog Number: AG21294	Calculated MW: 13 kDa	

Applications

Tested Applications: IHC, IF-P, ELISA	Positive Controls:
Species Specificity: human, mouse	IHC : mouse pancreas tissue, IF-P : mouse pancreas tissue,
Note-IHC: suggested antigen retrieval with TE buffer pH 9.0; (*) Alternatively, antigen retrieval may be performed with citrate buffer pH 6.0	

Background Information

Somatostatin is a peptide hormone that regulates the endocrine system and affects neurotransmission and cell proliferation via interaction with G protein-coupled somatostatin receptors and inhibition of the release of numerous secondary hormones. Somatostatin is a useful marker of D-cells of pancreatic islet cells. Somatostatin inhibits ins and glucagon secretion. Somatostatin has two active forms produced by alternative cleavage of a single preproprotein: one of 14 amino acids, the other of 28 amino acids. This antibody can recognize the full length and propeptide of Somatostatin.

Storage

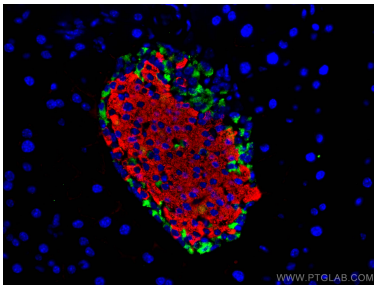
Storage:
Store at -20°C. Stable for one year after shipment.
Storage Buffer:
PBS with 0.02% sodium azide and 50% glycerol pH 7.3.
Aliquoting is unnecessary for -20°C storage

*** 20ul sizes contain 0.1% BSA

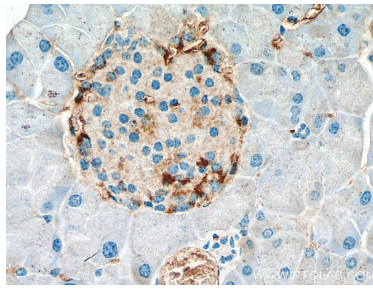
For technical support and original validation data for this product please contact:
T: 1 (888) 4PTGLAB (1-888-478-4522) (toll free in USA), or 1(312) 455-8498 (outside USA)
E: proteintech@ptglab.com
W: ptglab.com

This product is exclusively available under Proteintech Group brand and is not available to purchase from any other manufacturer.

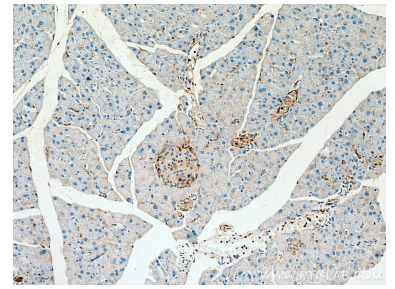
Selected Validation Data



Immunofluorescent analysis of (4% PFA) fixed mouse pancreas tissue using Somatostatin antibody (24496-1-AP) at dilution of 1:200 and CoraLite®488-Conjugated AffiniPure Goat Anti-Rabbit IgG(H+L), INS antibody (66198-1-Ig, Clone: 4B6A7, red).



Immunohistochemical analysis of paraffin-embedded mouse pancreas tissue slide using 24496-1-AP (Somatostatin antibody) at dilution of 1:8000 (under 40x lens). Heat mediated antigen retrieval with Tris-EDTA buffer (pH 9.0).



Immunohistochemical analysis of paraffin-embedded mouse pancreas tissue slide using 24496-1-AP (Somatostatin antibody) at dilution of 1:8000 (under 10x lens). Heat mediated antigen retrieval with Tris-EDTA buffer (pH 9.0).