

For Research Use Only

# PRKACA Polyclonal antibody

Catalog Number: 24503-1-AP

Featured Product

1 Publications



## Basic Information

<b>Catalog Number:</b> 24503-1-AP	<b>GenBank Accession Number:</b> BC039846	<b>Purification Method:</b> Antigen affinity purification
<b>Size:</b> 150ul, Concentration: 500 µg/ml by Nanodrop and 333 µg/ml by Bradford method using BSA as the standard;	<b>GeneID (NCBI):</b> 5566	<b>Recommended Dilutions:</b> WB 1:500-1:2000 IHC 1:50-1:500
<b>Source:</b> Rabbit	<b>Full Name:</b> protein kinase, cAMP-dependent, catalytic, alpha	
<b>Isotype:</b> IgG	<b>Calculated MW:</b> 41 kDa	
<b>Immunogen Catalog Number:</b> AG21478	<b>Observed MW:</b> 38-43 kDa	

## Applications

### Tested Applications:

IHC, WB, ELISA

### Cited Applications:

WB

### Species Specificity:

human, mouse, rat

### Cited Species:

rat

**Note-IHC: suggested antigen retrieval with TE buffer pH 9.0; (\*) Alternatively, antigen retrieval may be performed with citrate buffer pH 6.0**

### Positive Controls:

WB : Neuro-2a cells, HeLa cells, SH-SY5Y cells, mouse testis tissue, rat testis tissue

IHC : human breast cancer tissue,

## Background Information

### Notable Publications

Author	Pubmed ID	Journal	Application
Mei-Xuan Wan	36299877	Front Pharmacol	WB

## Storage

### Storage:

Store at -20°C. Stable for one year after shipment.

### Storage Buffer:

PBS with 0.02% sodium azide and 50% glycerol pH 7.3.

Aliquoting is unnecessary for -20°C storage

\*\*\* 20ul sizes contain 0.1% BSA

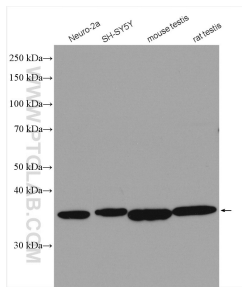
For technical support and original validation data for this product please contact:

T: 1 (888) 4PTGLAB (1-888-478-4522) (toll free in USA), or 1(312) 455-8498 (outside USA)

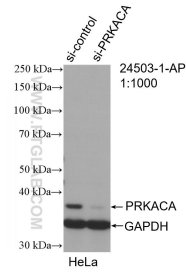
E: proteintech@ptglab.com  
W: ptglab.com

This product is exclusively available under Proteintech Group brand and is not available to purchase from any other manufacturer.

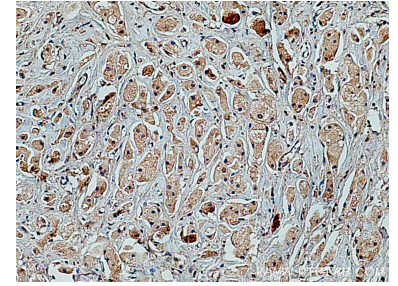
## Selected Validation Data



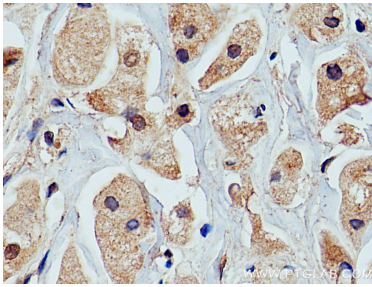
Various lysates were subjected to SDS PAGE followed by western blot with 24503-1-AP (PRKACA antibody) at dilution of 1:1000 incubated at room temperature for 1.5 hours.



WB result of PRKACA antibody (24503-1-AP; 1:1000); incubated at room temperature for 1.5 hours) with sh-Control and sh-PRKACA transfected HeLa cells.



Immunohistochemical analysis of paraffin-embedded human breast cancer tissue slide using 24503-1-AP (PRKACA antibody) at dilution of 1:200 (under 10x lens). Heat mediated antigen retrieval with Tris-EDTA buffer (pH 9.0).



Immunohistochemical analysis of paraffin-embedded human breast cancer tissue slide using 24503-1-AP (PRKACA antibody) at dilution of 1:200 (under 40x lens). Heat mediated antigen retrieval with Tris-EDTA buffer (pH 9.0).