

For Research Use Only

MAGIX Polyclonal antibody

Catalog Number: 24518-1-AP



Basic Information

Catalog Number:

24518-1-AP

Size:

150ul , Concentration: 700 ug/ml by Nanodrop and 380 ug/ml by Bradford method using BSA as the standard;

Source:

Rabbit

Isotype:

IgG

Immunogen Catalog Number:

AG21708

GenBank Accession Number:

BC114943

GeneID (NCBI):

79917

UNIPROT ID:

Q9H6Y5

Full Name:

MAGI family member, X-linked

Calculated MW:

334 aa, 35 kDa

Observed MW:

30 kDa

Purification Method:

Antigen affinity purification

Recommended Dilutions:

WB 1:200-1:1000

IP 0.5-4.0 ug for 1.0-3.0 mg of total protein lysate

Applications

Tested Applications:

WB, IP, ELISA

Species Specificity:

human, mouse

Positive Controls:

WB : mouse testis tissue,

IP : mouse testis tissue,

Storage

Storage:

Store at -20°C. Stable for one year after shipment.

Storage Buffer:

PBS with 0.02% sodium azide and 50% glycerol pH 7.3.

Aliquoting is unnecessary for -20°C storage

*** 20ul sizes contain 0.1% BSA

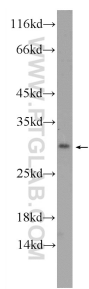
For technical support and original validation data for this product please contact:

T: 1 (888) 4PTGLAB (1-888-478-4522) (toll free in USA), or 1(312) 455-8498 (outside USA)

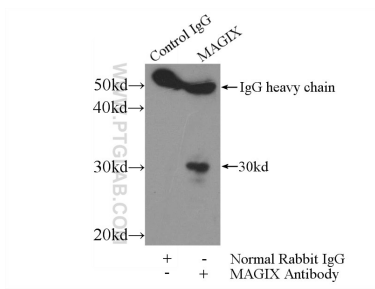
E: proteintech@ptglab.com
W: ptglab.com

This product is exclusively available under Proteintech Group brand and is not available to purchase from any other manufacturer.

Selected Validation Data



mouse testis tissue were subjected to SDS PAGE followed by western blot with 24518-1-AP (MAGIX Antibody) at dilution of 1:300 incubated at room temperature for 1.5 hours.



IP result of anti-MAGIX (IP:24518-1-AP, 3ug; Detection:24518-1-AP 1:300) with mouse testis tissue lysate 4800ug.