

For Research Use Only

C16orf72 Polyclonal antibody

Catalog Number: 24522-1-AP

1 Publications



Basic Information

Catalog Number:

24522-1-AP

Size:

150ul, Concentration: 1000 ug/ml by Nanodrop and 547 ug/ml by Bradford method using BSA as the standard;

Source:

Rabbit

Isotype:

IgG

Immunogen Catalog Number:

AG21585

GenBank Accession Number:

BC113570

GeneID (NCBI):

29035

UNIPROT ID:

Q14CZ0

Full Name:

chromosome 16 open reading frame 72

Calculated MW:

275 aa, 31 kDa

Observed MW:

31 kDa

Purification Method:

Antigen affinity purification

Recommended Dilutions:

WB 1:200-1:1000

Applications

Tested Applications:

WB, ELISA

Cited Applications:

IF

Species Specificity:

human, mouse

Positive Controls:

WB: HeLa cells,

Background Information

C16orf72 is identified on chromosome 16p13.2 loci. The MW of C16orf72 is 25-35 kDa in our detection.

Notable Publications

Author	Pubmed ID	Journal	Application
Dongxiao Li	38643468	Aging (Albany NY)	IF

Storage

Storage:

Store at -20°C. Stable for one year after shipment.

Storage Buffer:

PBS with 0.02% sodium azide and 50% glycerol pH 7.3.

Aliquoting is unnecessary for -20°C storage

*** 20ul sizes contain 0.1% BSA

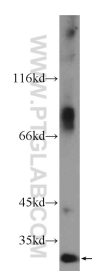
For technical support and original validation data for this product please contact:

T: 1 (888) 4PTGLAB (1-888-478-4522) (toll free in USA), or 1(312) 455-8498 (outside USA)

E: proteintech@ptglab.com
W: ptglab.com

This product is exclusively available under Proteintech Group brand and is not available to purchase from any other manufacturer.

Selected Validation Data



HeLa cells were subjected to SDS PAGE followed by western blot with 24522-1-AP (C16orf72 Antibody) at dilution of 1:300 incubated at room temperature for 1.5 hours.