

For Research Use Only

C13orf38 Polyclonal antibody

Catalog Number:24533-1-AP



Basic Information

Catalog Number: 24533-1-AP	GenBank Accession Number: BC146975	Purification Method: Antigen affinity purification
Size: 150ul , Concentration: 700 ug/ml by Nanodrop;	GeneID (NCBI): 728591	Recommended Dilutions: WB 1:500-1:2000
Source: Rabbit	UNIPROT ID: A6NNP5	
Isotype: IgG	Full Name: chromosome 13 open reading frame 38	
Immunogen Catalog Number: AG21598	Calculated MW: 241 aa, 28 kDa	
	Observed MW: 27 kDa	

Applications

Tested Applications: WB, ELISA	Positive Controls: WB : mouse testis tissue,
Species Specificity: human, mouse	

Background Information

CCDC169 (coiled-coil structural domain protein 169) is a member of the human genome, also known as C13orf38, and belongs to the coiled-coil structural domain protein family. Members of this family are widely involved in cellular physiological functions, including DNA recognition, chromosome segregation, and protein interactions. CCDC169 is expressed in a variety of tissues, especially in the testis, suggesting that it may be associated with reproductive processes. In addition, CCDC169 is abnormally expressed in a variety of tumors, such as lung cancer and thyroid cancer, which may be related to tumorigenesis and development. Currently, research on CCDC169 is still in progress, and its specific mechanism of action in diseases has not been fully clarified.

Storage

Storage:
Store at -20°C. Stable for one year after shipment.
Storage Buffer:
PBS with 0.02% sodium azide and 50% glycerol, pH7.3
Aliquoting is unnecessary for -20°C storage

*** 20ul sizes contain 0.1% BSA

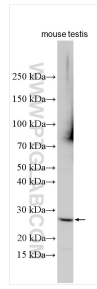
For technical support and original validation data for this product please contact:

T: 1 (888) 4PTGLAB (1-888-478-4522) (toll free in USA), or 1(312) 455-8498 (outside USA)

E: proteintech@ptglab.com
W: ptglab.com

This product is exclusively available under Proteintech Group brand and is not available to purchase from any other manufacturer.

Selected Validation Data



Various lysates were subjected to SDS PAGE followed by western blot with 24533-1-AP (C13orf38 antibody) at dilution of 1:1000 incubated at room temperature for 1.5 hours.