

For Research Use Only

# IGFALS Polyclonal antibody

Catalog Number: 24545-1-AP



## Basic Information

<b>Catalog Number:</b> 24545-1-AP	<b>GenBank Accession Number:</b> BC025681	<b>Purification Method:</b> Antigen affinity purification
<b>Size:</b> 150ul , Concentration: 350 µg/ml by Nanodrop;	<b>GeneID (NCBI):</b> 3483	<b>Recommended Dilutions:</b> WB 1:500-1:3000
<b>Source:</b> Rabbit	<b>Full Name:</b> insulin-like growth factor binding protein, acid labile subunit	
<b>Isotype:</b> IgG	<b>Calculated MW:</b> 605 aa, 66 kDa	
<b>Immunogen Catalog Number:</b> AG21696	<b>Observed MW:</b> 85 kDa	

## Applications

<b>Tested Applications:</b> WB, ELISA	<b>Positive Controls:</b> WB : human plasma,
<b>Species Specificity:</b> human	

## Background Information

THE ACID-LABILE SUBUNIT (ALS), a liver-derived, GH-dependent, 85-kD glycoprotein, is a key component of the 150-kD IGF circulating ternary complex (PMID: 17726072). The protein encoded by this gene is a serum protein that binds insulin-like growth factors, increasing their half-life and their vascular localization. Production of the encoded protein, which contains twenty leucine-rich repeats, is stimulated by growth hormone. Defects in this gene are a cause of acid-labile subunit deficiency, which manifests itself in a delayed and slow puberty.

## Storage

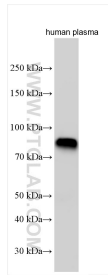
**Storage:**  
Store at -20°C. Stable for one year after shipment.  
**Storage Buffer:**  
PBS with 0.02% sodium azide and 50% glycerol pH 7.3.  
Aliquoting is unnecessary for -20°C storage

\*\*\* 20ul sizes contain 0.1% BSA

For technical support and original validation data for this product please contact:  
T: 1 (888) 4PTGLAB (1-888-478-4522) (toll free in USA), or 1(312) 455-8498 (outside USA)      E: proteintech@ptglab.com  
W: ptglab.com

This product is exclusively available under Proteintech Group brand and is not available to purchase from any other manufacturer.

## Selected Validation Data



Various lysates were subjected to SDS PAGE followed by western blot with 24545-1-AP (IGFALS antibody) at dilution of 1:1500 incubated at room temperature for 1.5 hours.