

For Research Use Only

ENTPD7 Polyclonal antibody

Catalog Number: 24558-1-AP



Basic Information

Catalog Number: 24558-1-AP	GenBank Accession Number: BC122857	Purification Method: Antigen affinity purification
Size: 150ul , Concentration: 1000 ug/ml by Nanodrop and 480 ug/ml by Bradford method using BSA as the standard;	GeneID (NCBI): 57089	Recommended Dilutions: WB 1:200-1:1000 IHC 1:150-1:600 IF/ICC 1:50-1:500
Source: Rabbit	UNIPROT ID: Q9NQZ7	
Isotype: IgG	Full Name: ectonucleoside triphosphate diphosphohydrolase 7	
Immunogen Catalog Number: AG18417	Calculated MW: 604 aa, 69 kDa	
	Observed MW: 69 kDa	

Applications

Tested Applications: WB, IHC, IF/ICC, ELISA	Positive Controls:
Species Specificity: human	WB : HeLa cells,
Note-IHC: suggested antigen retrieval with TE buffer pH 9.0; (*) Alternatively, antigen retrieval may be performed with citrate buffer pH 6.0	IHC : human ovary tumor tissue,
	IF/ICC : HeLa cells,

Background Information

Ectonucleoside triphosphate diphosphohydrolase 7 (ENTPD7), also known as LALP1, is a member of the ectonucleoside triphosphate diphosphohydrolase (E-NTPDase) family. It is located in the nucleoplasm and has an effect on oxidative stress, DNA damage and ageing (PMID: 27737960).

Storage

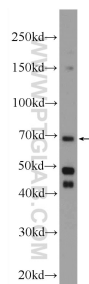
Storage:
Store at -20°C. Stable for one year after shipment.
Storage Buffer:
PBS with 0.02% sodium azide and 50% glycerol pH 7.3.
Aliquoting is unnecessary for -20°C storage

*** 20ul sizes contain 0.1% BSA

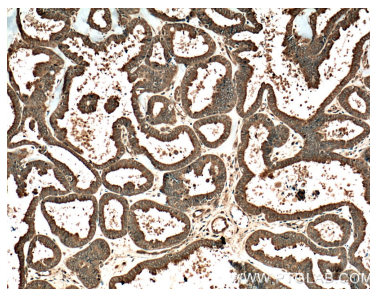
For technical support and original validation data for this product please contact:
T: 1 (888) 4PTGLAB (1-888-478-4522) (toll free in USA), or 1(312) 455-8498 (outside USA)
E: proteintech@ptglab.com
W: ptglab.com

This product is exclusively available under Proteintech Group brand and is not available to purchase from any other manufacturer.

Selected Validation Data



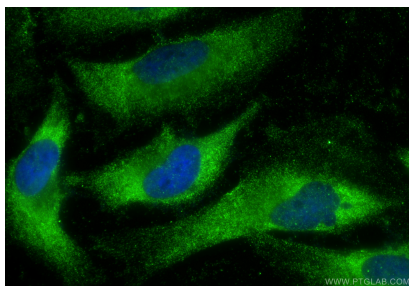
HeLa cells were subjected to SDS PAGE followed by western blot with 24558-1-AP (ENTPD7 Antibody) at dilution of 1:300 incubated at room temperature for 1.5 hours.



Immunohistochemical analysis of paraffin-embedded human ovary tumor tissue slide using 24558-1-AP (ENTPD7 Antibody) at dilution of 1:300 (under 10x lens). Heat mediated antigen retrieval with Tris-EDTA buffer (pH 9.0).



Immunohistochemical analysis of paraffin-embedded human ovary tumor tissue slide using 24558-1-AP (ENTPD7 Antibody) at dilution of 1:300 (under 40x lens). Heat mediated antigen retrieval with Tris-EDTA buffer (pH 9.0).



Immunofluorescent analysis of (-20°C Ethanol) fixed HeLa cells using ENTPD7 antibody (24558-1-AP) at dilution of 1:200 and CoraLite®488-Conjugated Goat Anti-Rabbit IgG(H+L) (SA00013-2).