

For Research Use Only

ZW10 Polyclonal antibody

Catalog Number: 24561-1-AP

Featured Product

7 Publications



Basic Information

Catalog Number:

24561-1-AP

Size:

150ul, Concentration: 800 ug/ml by Nanodrop;

Source:

Rabbit

Isotype:

IgG

Immunogen Catalog Number:

AG19138

GenBank Accession Number:

BC128264

GeneID (NCBI):

9183

UNIPROT ID:

O43264

Full Name:

ZW10, kinetochore associated, homolog (Drosophila)

Calculated MW:

779 aa, 89 kDa

Observed MW:

88-90 kDa

Purification Method:

Antigen affinity purification

Recommended Dilutions:

WB 1:500-1:2000

IP 0.5-4.0 ug for 1.0-3.0 mg of total protein lysate

IF/ICC 1:200-1:800

Applications

Tested Applications:

WB, IF/ICC, FC (Intra), IP, ELISA

Cited Applications:

WB, IF

Species Specificity:

human, mouse, rat

Cited Species:

human, mouse, monkey

Positive Controls:

WB: Jurkat cells, HeLa cells, mouse testis tissue, K-562 cells, rat liver tissue, rat testis tissue

IP: Jurkat cells,

IF/ICC: HeLa cells,

Background Information

ZW10 is the human homolog of the Drosophila melanogaster Zw10 protein. ZW10 is localized to kinetochores and kinetochore-associated microtubules and is an essential component of the mitotic checkpoint, which prevents cells from prematurely exiting mitosis (PMID: 17102640). ZW10 proteins in Drosophila and HeLa cells display a similar and intriguing cell cycle-dependent intracellular distribution. ZW10 protein first becomes localized to the kinetochore at prometaphase, but then appears to move onto the kinetochore microtubules of the spindle at metaphase, and then back to the kinetochore at anaphase (PMID: 9700164).

Notable Publications

Author	Pubmed ID	Journal	Application
Dijin Xu	29367353	J Cell Biol	WB
Haining Zhou	26743940	Nat Commun	IF
Jacob A Herman	35483740	Genes Dev	WB

Storage

Storage:

Store at -20°C. Stable for one year after shipment.

Storage Buffer:

PBS with 0.02% sodium azide and 50% glycerol pH 7.3.

Aliquoting is unnecessary for -20°C storage

*** 20ul sizes contain 0.1% BSA

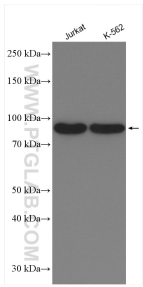
For technical support and original validation data for this product please contact:

T: 1 (888) 4PTGLAB (1-888-478-4522) (toll free in USA), or 1(312) 455-8498 (outside USA)

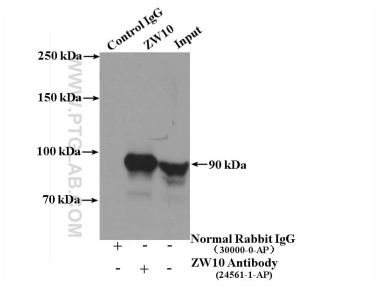
E: proteintech@ptglab.com
W: ptglab.com

This product is exclusively available under Proteintech Group brand and is not available to purchase from any other manufacturer.

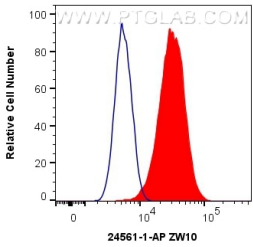
Selected Validation Data



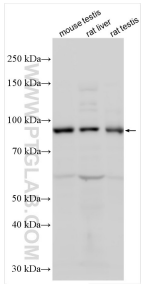
Various lysates were subjected to SDS PAGE followed by western blot with 24561-1-AP (ZW10 antibody) at dilution of 1:1000 incubated at room temperature for 1.5 hours.



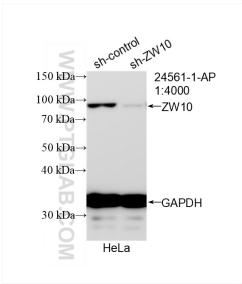
IP result of anti-ZW10 (IP:24561-1-AP, 4ug; Detection:24561-1-AP 1:500) with Jurkat cells lysate 3200ug.



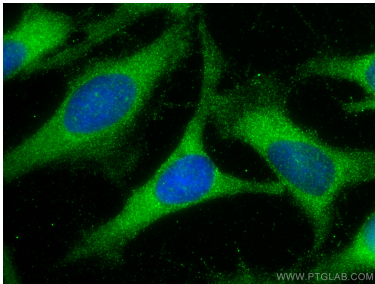
1X10⁶ HeLa cells were intracellularly stained with 0.4 ug Anti-Human ZW10 (24561-1-AP) and CoraLite®488-Conjugated AffiniPure Goat Anti-Rabbit IgG(H+L) at dilution 1:1000 (red), or 0.4 ug Isotype Control. Cells were fixed with 4% PFA and permeabilized with Flow Cytometry Perm Buffer (PF00011-C).



Various lysates were subjected to SDS PAGE followed by western blot with 24561-1-AP (ZW10 antibody) at dilution of 1:2000 incubated at room temperature for 1.5 hours.



WB result of ZW10 antibody (24561-1-AP; 1:4000; incubated at room temperature for 1.5 hours) with sh-Control and sh-ZW10 transfected HeLa cells.



Immunofluorescent analysis of (-20°C Methanol) fixed HeLa cells using ZW10 antibody (24561-1-AP) at dilution of 1:400 and CoraLite®488-Conjugated AffiniPure Goat Anti-Rabbit IgG(H+L).