

For Research Use Only

ZW10 Polyclonal antibody, PBS Only

Catalog Number: 24561-1-PBS

Featured Product



Basic Information

Catalog Number:

24561-1-PBS

Size:

100ug, Concentration: 1 mg/ml by Nanodrop;

Source:

Rabbit

Isotype:

IgG

Immunogen Catalog Number:

AG19138

GenBank Accession Number:

BC128264

GeneID (NCBI):

9183

UNIPROT ID:

O43264

Full Name:

ZW10, kinetochore associated, homolog (Drosophila)

Calculated MW:

779 aa, 89 kDa

Observed MW:

88-90 kDa

Purification Method:

Antigen affinity purification

Applications

Tested Applications:

WB, IF/ICC, FC (Intra), IP, ELISA

Species Specificity:

human, mouse, rat

Background Information

ZW10 is the human homolog of the Drosophila melanogaster Zw10 protein. ZW10 is localized to kinetochores and kinetochore-associated microtubules and is an essential component of the mitotic checkpoint, which prevents cells from prematurely exiting mitosis (PMID: 17102640). ZW10 proteins in Drosophila and HeLa cells display a similar and intriguing cell cycle-dependent intracellular distribution. ZW10 protein first becomes localized to the kinetochore at prometaphase, but then appears to move onto the kinetochore microtubules of the spindle at metaphase, and then back to the kinetochore at anaphase (PMID: 9700164).

Storage

Storage:

Store at -80°C.

Storage Buffer:

PBS only, pH7.3

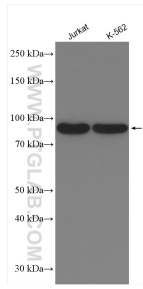
For technical support and original validation data for this product please contact:

T: 1 (888) 4PTGLAB (1-888-478-4522) (toll free in USA), or 1(312) 455-8498 (outside USA)

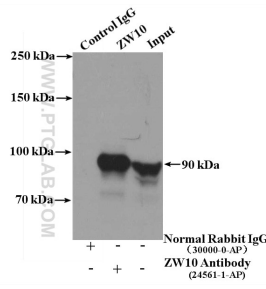
E: proteintech@ptglab.com
W: ptglab.com

This product is exclusively available under Proteintech Group brand and is not available to purchase from any other manufacturer.

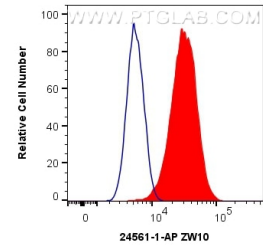
Selected Validation Data



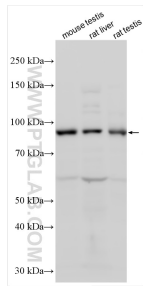
Various lysates were subjected to SDS PAGE followed by western blot with 24561-1-AP (ZW10 antibody) at dilution of 1:1000 incubated at room temperature for 1.5 hours. This data was developed using the same antibody clone with 24561-1-PBS in a different storage buffer formulation.



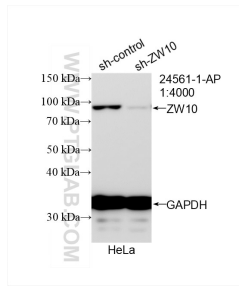
IP result of anti-ZW10 (IP:24561-1-AP, 4ug; Detection:24561-1-AP 1:500) with Jurkat cells lysate 3200ug. This data was developed using the same antibody clone with 24561-1-PBS in a different storage buffer formulation.



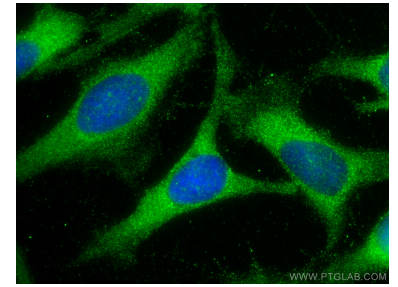
1×10^6 HeLa cells were intracellularly stained with 0.4 ug Anti-Human ZW10 (24561-1-AP) and CoraLite@488-Conjugated AffiniPure Goat Anti-Rabbit IgG(H+L) at dilution 1:1000 (red), or 0.4 ug Isotype Control. Cells were fixed with 4% PFA and permeabilized with Flow Cytometry Perm Buffer. This data was developed using the same antibody clone with 24561-1-PBS in a different storage buffer formulation.



Various lysates were subjected to SDS PAGE followed by western blot with 24561-1-AP (ZW10 antibody) at dilution of 1:2000 incubated at room temperature for 1.5 hours. This data was developed using the same antibody clone with 24561-1-PBS in a different storage buffer formulation.



WB result of ZW10 antibody (24561-1-AP; 1:4000; incubated at room temperature for 1.5 hours) with sh-Control and sh-ZW10 transfected HeLa cells. This data was developed using the same antibody clone with 24561-1-PBS in a different storage buffer formulation.



Immunofluorescent analysis of (-20°C Methanol) fixed HeLa cells using ZW10 antibody (24561-1-AP) at dilution of 1:400 and CoraLite@488-Conjugated AffiniPure Goat Anti-Rabbit IgG(H+L). This data was developed using the same antibody clone with 24561-1-PBS in a different storage buffer formulation.