

For Research Use Only

NCAPG Polyclonal antibody, PBS Only

Catalog Number: 24563-1-PBS

Featured Product



Basic Information

Catalog Number:

24563-1-PBS

Size:

100ug, Concentration: 1 mg/ml by Nanodrop;

Source:

Rabbit

Isotype:

IgG

Immunogen Catalog Number:

AG19926

GenBank Accession Number:

BC068467

GeneID (NCBI):

64151

UNIPROT ID:

Q9BPX3

Full Name:

non-SMC condensin I complex, subunit G

Calculated MW:

1015 aa, 114 kDa

Observed MW:

131 kDa

Purification Method:

Antigen affinity purification

Applications

Tested Applications:

WB, IHC, IF/ICC, IP, Indirect ELISA

Species Specificity:

human

Storage

Storage:

Store at -80°C.

Storage Buffer:

PBS only, pH7.3

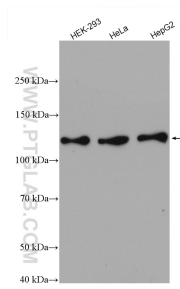
For technical support and original validation data for this product please contact:

T: 1 (888) 4PTGLAB (1-888-478-4522) (toll free in USA), or 1(312) 455-8498 (outside USA)

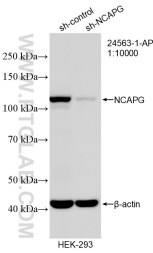
E: proteintech@ptglab.com
W: ptglab.com

This product is exclusively available under Proteintech Group brand and is not available to purchase from any other manufacturer.

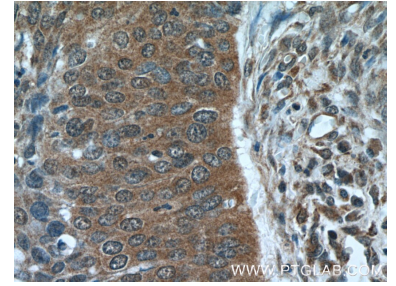
Selected Validation Data



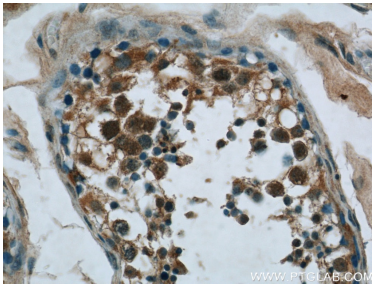
Various lysates were subjected to SDS PAGE followed by western blot with 24563-1-AP (NCAPG antibody) at dilution of 1:10000 incubated at room temperature for 1.5 hours. This data was developed using the same antibody clone with 24563-1-PBS in a different storage buffer formulation.



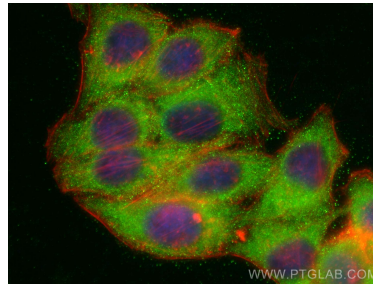
WB result of NCAPG antibody (24563-1-AP; 1:10000; incubated at room temperature for 1.5 hours) with sh-Control and sh-NCAPG transfected HEK-293 cells. This data was developed using the same antibody clone with 24563-1-PBS in a different storage buffer formulation.



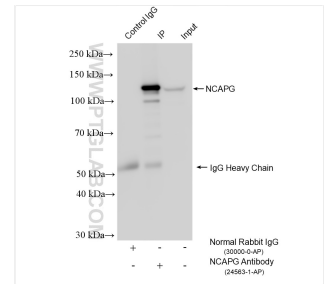
Immunohistochemical analysis of paraffin-embedded human cervical cancer tissue slide using 24563-1-AP (NCAPG Antibody) at dilution of 1:50 (under 40x lens). This data was developed using the same antibody clone with 24563-1-PBS in a different storage buffer formulation.



Immunohistochemical analysis of paraffin-embedded human testis tissue slide using 24563-1-AP (NCAPG Antibody) at dilution of 1:50 (under 40x lens). This data was developed using the same antibody clone with 24563-1-PBS in a different storage buffer formulation.



Immunofluorescent analysis of (-20°C Ethanol) fixed Hep2 cells using NCAPG antibody (24563-1-AP) at dilution of 1:400 and CoraLite@488-Conjugated AffiniPure Goat Anti-Rabbit IgG(H+L) (SA00013-2), CL594-phalloidin (red). This data was developed using the same antibody clone with 24563-1-PBS in a different storage buffer formulation.



IP result of anti-NCAPG (IP:24563-1-AP, 4ug; Detection:24563-1-AP 1:8000) with HEK-293 cells lysate 1800 ug. This data was developed using the same antibody clone with 24563-1-PBS in a different storage buffer formulation.