

For Research Use Only

LRRC18 Polyclonal antibody

Catalog Number: 24571-1-AP



Basic Information

| | | |
|--|--|--|
| Catalog Number: 24571-1-AP | GenBank Accession Number: BC036722 | Purification Method: Antigen affinity purification |
| Size: 150ul , Concentration: 600 µg/ml by Nanodrop and 393 µg/ml by Bradford method using BSA as the standard; | GeneID (NCBI): 474354 | Recommended Dilutions: WB 1:500-1:1000 IP 0.5-4.0 ug for IP and 1:500-1:1000 for WB |
| Source: Rabbit | Full Name: leucine rich repeat containing 18 | Calculated MW: 261 aa, 30 kDa |
| Isotype: IgG | Observed MW: 30 kDa | IHC 1:20-1:200 |
| Immunogen Catalog Number: AG20996 | | |

Applications

| | |
|--|---|
| Tested Applications: IHC, IP, WB, ELISA | Positive Controls: WB : mouse testis tissue, IP : mouse testis tissue, IHC : human testis tissue, |
| Species Specificity: human, mouse | |
| Note-IHC: suggested antigen retrieval with TE buffer pH 9.0; (*) Alternatively, antigen retrieval may be performed with citrate buffer pH 6.0 | |

Background Information

Leucine rich repeat containing protein 18 (LRRC18) encodes a 261 amino-acids protein (29.6 kDa), which contains 7 leucine rich repeat and belongs to LRR superfamily. The function of protein is still non-known, but it may be involved in the regulation of spermatogenesis and sperm maturation. The protein localizes in cytoplasm and express in some male reproduction tissues.

Storage

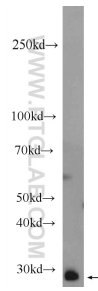
Storage:
Store at -20°C. Stable for one year after shipment.
Storage Buffer:
PBS with 0.02% sodium azide and 50% glycerol pH 7.3.
Aliquoting is unnecessary for -20°C storage

*** 20ul sizes contain 0.1% BSA

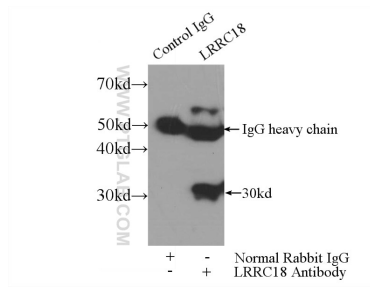
For technical support and original validation data for this product please contact:
T: 1 (888) 4PTGLAB (1-888-478-4522) (toll free in USA), or 1(312) 455-8498 (outside USA)
E: proteintech@ptglab.com
W: ptglab.com

This product is exclusively available under Proteintech Group brand and is not available to purchase from any other manufacturer.

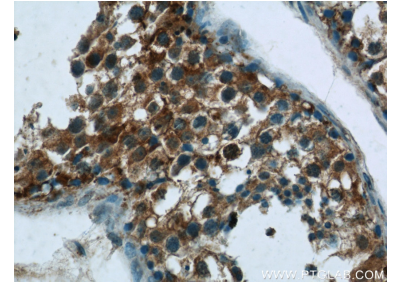
Selected Validation Data



mouse testis tissue were subjected to SDS PAGE followed by western blot with 24571-1-AP (LRRC18 Antibody) at dilution of 1:600 incubated at room temperature for 1.5 hours.



IP Result of anti-LRRC18 (IP:24571-1-AP, 3ug; Detection:24571-1-AP 1:500) with mouse testis tissue lysate 4000ug.



Immunohistochemical analysis of paraffin-embedded human testis tissue slide using 24571-1-AP (LRRC18 Antibody) at dilution of 1:50 (under 40x lens).