

For Research Use Only

CEP85L Polyclonal antibody

Catalog Number: 24588-1-AP

Featured Product

2 Publications



Basic Information

Catalog Number:

24588-1-AP

Size:

150ul, Concentration: 700 ug/ml by Nanodrop and 353 ug/ml by Bradford method using BSA as the standard;

Source:

Rabbit

Isotype:

IgG

Immunogen Catalog Number:

AG20235

GenBank Accession Number:

BC153054

GeneID (NCBI):

387119

UNIPROT ID:

Q5SZL2

Full Name:

chromosome 6 open reading frame 204

Calculated MW:

805 aa, 92 kDa

Observed MW:

56 kDa

Purification Method:

Antigen affinity purification

Recommended Dilutions:

WB 1:300-1:800

IHC 1:50-1:500

Applications

Tested Applications:

WB, IHC, ELISA

Cited Applications:

WB, IF, CoIP

Species Specificity:

human, mouse

Cited Species:

human, mouse

Positive Controls:

WB: PC-13 cells,

IHC: mouse testis tissue,

Note-IHC: suggested antigen retrieval with TE buffer pH 9.0; (*) Alternatively, antigen retrieval may be performed with citrate buffer pH 6.0

Background Information

CEP85L, also named as C6orf204, is a gene which encodes a protein that has identified as a breast cancer antigen. Nothing more is known of its function at this time. There're five transcript variants with MW 45 kDa, 55-56 kDa and 91-92 kDa.

Notable Publications

Author	Pubmed ID	Journal	Application
Andrew Kodani	32097629	Neuron	WB, IF, CoIP
Meng-Han Tsai	32097630	Neuron	WB, IF

Storage

Storage:

Store at -20°C. Stable for one year after shipment.

Storage Buffer:

PBS with 0.02% sodium azide and 50% glycerol pH 7.3.

Aliquoting is unnecessary for -20°C storage

*** 20ul sizes contain 0.1% BSA

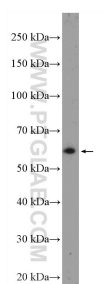
For technical support and original validation data for this product please contact:

T: 1 (888) 4PTGLAB (1-888-478-4522) (toll free in USA), or 1(312) 455-8498 (outside USA)

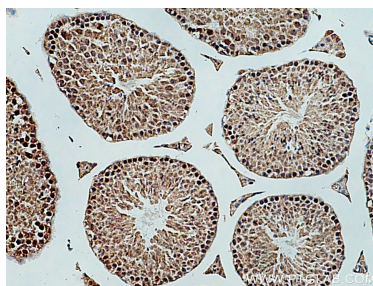
E: proteintech@ptglab.com
W: ptglab.com

This product is exclusively available under Proteintech Group brand and is not available to purchase from any other manufacturer.

Selected Validation Data



PC-13 cells were subjected to SDS PAGE followed by western blot with 24588-1-AP (C6orf204 Antibody) at dilution of 1:600 incubated at room temperature for 1.5 hours.



Immunohistochemical analysis of paraffin-embedded mouse testis tissue slide using 24588-1-AP (CEP85L antibody) at dilution of 1:200 (under 10x lens). Heat mediated antigen retrieval with Tris-EDTA buffer (pH 9.0).