

For Research Use Only

# CEP85L Polyclonal antibody, PBS Only

Catalog Number: 24588-1-PBS

Featured Product



## Basic Information

**Catalog Number:**

24588-1-PBS

**Size:**

100ug , Concentration: 1 mg/ml by Nanodrop;

**Source:**

Rabbit

**Isotype:**

IgG

**Immunogen Catalog Number:**

AG20235

**GenBank Accession Number:**

BC153054

**GeneID (NCBI):**

387119

**UNIPROT ID:**

Q5SZL2

**Full Name:**

chromosome 6 open reading frame 204

**Calculated MW:**

805 aa, 92 kDa

**Observed MW:**

56 kDa

**Purification Method:**

Antigen affinity purification

## Applications

**Tested Applications:**

WB, IHC, Indirect ELISA

**Species Specificity:**

human, mouse

## Background Information

CEP85L, also named as C6orf204, is a gene which encodes a protein that has identified as a breast cancer antigen. Nothing more is known of its function at this time. There're five transcript variants with MW 45 kDa, 55-56 kDa and 91-92 kDa.

## Storage

**Storage:**

Store at -80°C.

**Storage Buffer:**

PBS Only

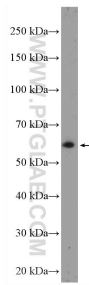
For technical support and original validation data for this product please contact:

T: 1 (888) 4PTGLAB (1-888-478-4522) (toll free in USA), or 1(312) 455-8498 (outside USA)

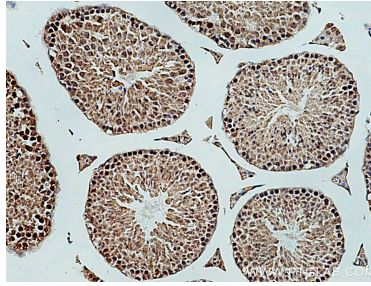
E: [proteintech@ptglab.com](mailto:proteintech@ptglab.com)  
W: [ptglab.com](http://ptglab.com)

This product is exclusively available under Proteintech Group brand and is not available to purchase from any other manufacturer.

## Selected Validation Data



PC-13 cells were subjected to SDS PAGE followed by western blot with 24588-1-AP (C6orf204 Antibody) at dilution of 1:600 incubated at room temperature for 1.5 hours. This data was developed using the same antibody clone with 24588-1-PBS in a different storage buffer formulation.



Immunohistochemical analysis of paraffin-embedded mouse testis tissue slide using 24588-1-AP (CEP85L antibody) at dilution of 1:200 (under 10x lens). Heat mediated antigen retrieval with Tris-EDTA buffer (pH 9.0). This data was developed using the same antibody clone with 24588-1-PBS in a different storage buffer formulation.