

For Research Use Only

LCTL Polyclonal antibody

Catalog Number: 24589-1-AP



Basic Information

Catalog Number: 24589-1-AP	GenBank Accession Number: BC152990	Purification Method: Antigen affinity purification
Size: 150ul , Concentration: 850 µg/ml by Nanodrop;	GeneID (NCBI): 197021	Recommended Dilutions: WB 1:500-1:2000 IF 1:10-1:100
Source: Rabbit	UNIPROT ID: Q6UWM7	
Isotype: IgG	Full Name: lactase-like	
Immunogen Catalog Number: AG20220	Calculated MW: 567 aa, 65 kDa	
	Observed MW: 39 kDa, 65 kDa, 70 kDa	

Applications

Tested Applications: IF, WB, ELISA	Positive Controls:
Species Specificity: human	WB : MCF-7 cells, IF : HeLa cells,

Background Information

Lactase-like is a glycosidase enzyme, which could hydrolyze glycosidic bonds and are classified into families based on primary amino acid sequence. The mouse ortholog of this protein has been characterized and has a domain structure of an N-terminal signal peptide, glycosidase domain, transmembrane domain, and a short cytoplasmic tail.

Storage

Storage:
Store at -20°C. Stable for one year after shipment.
Storage Buffer:
PBS with 0.02% sodium azide and 50% glycerol pH 7.3.
Aliquoting is unnecessary for -20°C storage

*** 20ul sizes contain 0.1% BSA

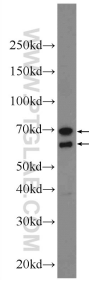
For technical support and original validation data for this product please contact:

T: 1 (888) 4PTGLAB (1-888-478-4522) (toll free in USA), or 1(312) 455-8498 (outside USA)

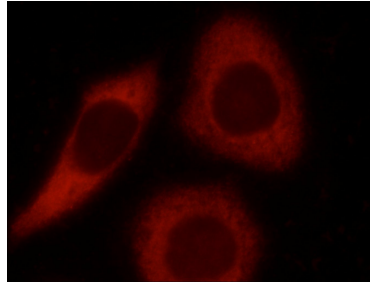
E: proteintech@ptglab.com
W: ptglab.com

This product is exclusively available under Proteintech Group brand and is not available to purchase from any other manufacturer.

Selected Validation Data



MCF-7 cells were subjected to SDS PAGE followed by western blot with 24589-1-AP (LCTL Antibody) at dilution of 1:1000 incubated at room temperature for 1.5 hours.



Immunofluorescent analysis of HeLa cells using 24589-1-AP (LCTL antibody) at dilution of 1:25 and Rhodamine-Goat anti-Rabbit IgG.