

For Research Use Only

SLC22A1 Polyclonal antibody

Catalog Number: 24617-1-AP

4 Publications



Basic Information

Catalog Number:

24617-1-AP

Size:

150ul, Concentration: 500 ug/ml by Nanodrop and 273 ug/ml by Bradford method using BSA as the standard;

Source:

Rabbit

Isotype:

IgG

Immunogen Catalog Number:

AG18806

GenBank Accession Number:

BC126364

GeneID (NCBI):

6580

UNIPROT ID:

O15245

Full Name:

solute carrier family 22 (organic cation transporter), member 1

Calculated MW:

554 aa, 61 kDa

Observed MW:

61-67 kDa

Purification Method:

Antigen affinity purification

Recommended Dilutions:

WB 1:500-1:1000

IP 0.5-4.0 ug for 1.0-3.0 mg of total protein lysate

IHC 1:50-1:500

Applications

Tested Applications:

WB, IP, IHC, ELISA

Cited Applications:

WB

Species Specificity:

human, mouse, rat

Cited Species:

human, mouse

Note-IHC: suggested antigen retrieval with TE buffer pH 9.0; (*) Alternatively, antigen retrieval may be performed with citrate buffer pH 6.0

Positive Controls:

WB : mouse liver tissue, rat liver tissue

IP : mouse liver tissue,

IHC : mouse liver tissue,

Notable Publications

Author	Pubmed ID	Journal	Application
Sylvia Andrzejewski	28988825	Cell Metab	WB
Dongyin Yuan	35352364	J Food Biochem	WB
Ting-Yu Lin	37474759	Nat Chem Biol	

Storage

Storage:

Store at -20°C. Stable for one year after shipment.

Storage Buffer:

PBS with 0.02% sodium azide and 50% glycerol pH 7.3.

Aliquoting is unnecessary for -20°C storage

*** 20ul sizes contain 0.1% BSA

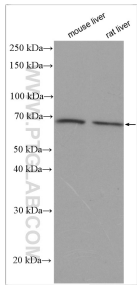
For technical support and original validation data for this product please contact:

T: 1 (888) 4PTGLAB (1-888-478-4522) (toll free in USA), or 1(312) 455-8498 (outside USA)

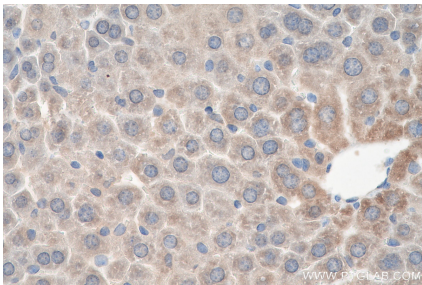
E: proteintech@ptglab.com
W: ptglab.com

This product is exclusively available under Proteintech Group brand and is not available to purchase from any other manufacturer.

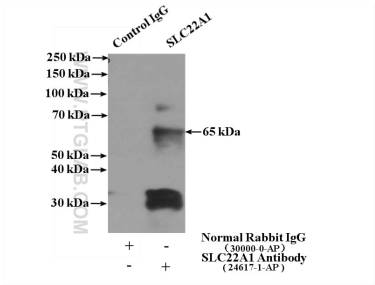
Selected Validation Data



Various lysates were subjected to SDS PAGE followed by western blot with 24617-1-AP (SLC22A1 antibody) at dilution of 1:800 incubated at room temperature for 1.5 hours.



Immunohistochemical analysis of paraffin-embedded mouse liver tissue slide using 24617-1-AP (SLC22A1 antibody) at dilution of 1:200 (under 40x lens). Heat mediated antigen retrieval with Tris-EDTA buffer (pH 9.0).



IP result of anti-SLC22A1 (IP:24617-1-AP, 4ug; Detection:24617-1-AP 1:1000) with mouse liver tissue lysate 4000ug.