

For Research Use Only

# PHF2 Polyclonal antibody

Catalog Number: 24624-1-AP **1 Publications**



## Basic Information

<b>Catalog Number:</b> 24624-1-AP	<b>GenBank Accession Number:</b> BC152437	<b>Purification Method:</b> Antigen affinity purification
<b>Size:</b> 150ul , Concentration: 700 µg/ml by Nanodrop and 367 µg/ml by Bradford method using BSA as the standard;	<b>GeneID (NCBI):</b> 5253	<b>Recommended Dilutions:</b> WB 1:200-1:1000 IP 0.5-4.0 ug for IP and 1:500-1:1000 for WB
<b>Source:</b> Rabbit	<b>Full Name:</b> PHD finger protein 2	<b>Calculated MW:</b> 1101 aa, 121 kDa
<b>Isotype:</b> IgG	<b>Observed MW:</b> 150 kDa	<b>IHC 1:20-1:200</b>
<b>Immunogen Catalog Number:</b> AG20257		

## Applications

<b>Tested Applications:</b> IHC, IP, WB, ELISA	<b>Positive Controls:</b>
<b>Cited Applications:</b> WB	<b>WB:</b> Jurkat cells,
<b>Species Specificity:</b> human	<b>IP:</b> HeLa cells,
<b>Cited Species:</b> human	<b>IHC:</b> human cervical cancer tissue,

**Note-IHC: suggested antigen retrieval with TE buffer pH 9.0; (\*) Alternatively, antigen retrieval may be performed with citrate buffer pH 6.0**

## Background Information

PHD finger protein 2 (PHF2), also known as JHDM1E (Jumonji C domain-containing histone demethylase 1E) or GRC5, is a 1101 amino acid protein, which contains one JmjC domain and one PHD-type zinc finger. PHF2 belongs to the JHDM1 histone demethylase family and localizes in the nucleus. PHF2 demethylases both histones and non-histone proteins. PHF2 is widely expressed in various tissues and exists as two alternative splicing isoforms. The gene encoding PHF2 lies in the candidate region for hereditary sensory neuropathy type I (HSN1), a disorder characterized by sensory dysfunction

## Notable Publications

Author	Pubmed ID	Journal	Application
Tong-Min Wang	37352861	Am J Hum Genet	WB

## Storage

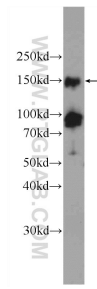
**Storage:**  
Store at -20°C. Stable for one year after shipment.  
**Storage Buffer:**  
PBS with 0.02% sodium azide and 50% glycerol pH 7.3.  
Aliquoting is unnecessary for -20°C storage

\*\*\* 20ul sizes contain 0.1% BSA

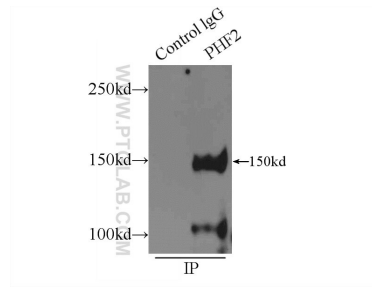
For technical support and original validation data for this product please contact:  
T: 1 (888) 4PTGLAB (1-888-478-4522) (toll free in USA), or 1(312) 455-8498 (outside USA)  
E: proteintech@ptglab.com  
W: ptglab.com

This product is exclusively available under Proteintech Group brand and is not available to purchase from any other manufacturer.

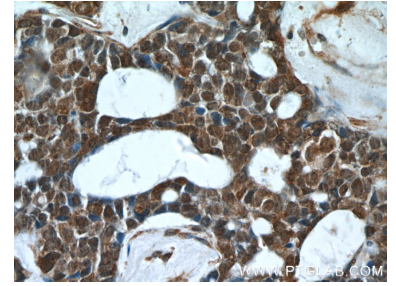
## Selected Validation Data



Jurkat cells were subjected to SDS PAGE followed by western blot with 24624-1-AP (PHF2 Antibody) at dilution of 1:300 incubated at room temperature for 1.5 hours.



IP Result of anti-PHF2 (IP:24624-1-AP, 4ug; Detection:24624-1-AP 1:500) with HeLa cells lysate 1800ug.



Immunohistochemical analysis of paraffin-embedded human cervical cancer tissue slide using 24624-1-AP (PHF2 Antibody) at dilution of 1:50 (under 40x lens).