

For Research Use Only

# LY6G5C Polyclonal antibody

Catalog Number: 24633-1-AP **1 Publications**



## Basic Information

<b>Catalog Number:</b> 24633-1-AP	<b>GenBank Accession Number:</b> BC141637	<b>Purification Method:</b> Antigen affinity purification
<b>Size:</b> 150ul , Concentration: 350 µg/ml by Nanodrop and 227 µg/ml by Bradford method using BSA as the standard;	<b>GeneID (NCBI):</b> 80741	<b>Recommended Dilutions:</b> WB 1:200-1:1000 IP 0.5-4.0 ug for IP and 1:200-1:1000 for WB
<b>Source:</b> Rabbit	<b>Full Name:</b> Lymphocyte antigen 6 complex, locus G5C	
<b>Isotype:</b> IgG	<b>Calculated MW:</b> 150 aa, 17 kDa	
<b>Immunogen Catalog Number:</b> AG18812	<b>Observed MW:</b> 16 kDa, 32 kDa, 64 kDa	

## Applications

<b>Tested Applications:</b> IP, WB, ELISA	<b>Positive Controls:</b> WB : mouse spleen tissue, IP : K-562 cells,
<b>Cited Applications:</b> IF	
<b>Species Specificity:</b> human, mouse	
<b>Cited Species:</b> mouse	

## Background Information

LY6G5C, also known as C6orf20, is a low abundance secreted protein. The function of LY6G5C, remains largely unknown. It may have a role in hematopoietic cell differentiation. Catalog# 11714-1-AP can detect the protein and its dimer and tetramer.

## Notable Publications

Author	Pubmed ID	Journal	Application
Maria Razzoli	32192914	EBioMedicine	IF

## Storage

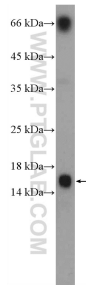
**Storage:**  
Store at -20°C. Stable for one year after shipment.  
**Storage Buffer:**  
PBS with 0.02% sodium azide and 50% glycerol pH 7.3.  
Aliquoting is unnecessary for -20°C storage

\*\*\* 20ul sizes contain 0.1% BSA

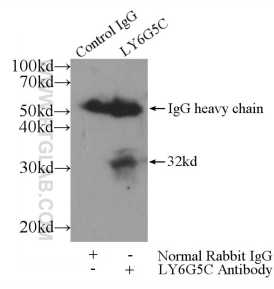
For technical support and original validation data for this product please contact:  
T: 1 (888) 4PTGLAB (1-888-478-4522) (toll free in USA), or 1(312) 455-8498 (outside USA)  
E: proteintech@ptglab.com  
W: ptglab.com

This product is exclusively available under Proteintech Group brand and is not available to purchase from any other manufacturer.

## Selected Validation Data



mouse spleen tissue were subjected to SDS PAGE followed by western blot with 24633-1-AP (LY6G5C Antibody) at dilution of 1:100 incubated at room temperature for 1.5 hours.



IP Result of anti-LY6G5C (IP:24633-1-AP, 4ug; Detection:24633-1-AP 1:300) with K-562 cells lysate 1720ug.