

For Research Use Only

# ISG20L2 Polyclonal antibody

Catalog Number: 24639-1-AP

2 Publications



## Basic Information

### Catalog Number:

24639-1-AP

### Size:

150ul, Concentration: 1000 ug/ml by Nanodrop and 473 ug/ml by Bradford method using BSA as the standard;

### Source:

Rabbit

### Isotype:

IgG

### Immunogen Catalog Number:

AG20026

### GenBank Accession Number:

BC000575

### GeneID (NCBI):

81875

### UNIPROT ID:

Q9H9L3

### Full Name:

interferon stimulated exonuclease gene 20kDa-like 2

### Calculated MW:

353 aa, 39 kDa

### Observed MW:

40 kDa

### Purification Method:

Antigen affinity purification

### Recommended Dilutions:

WB 1:1000-1:6000

IP 0.5-4.0 ug for 1.0-3.0 mg of total protein lysate

## Applications

### Tested Applications:

WB, IP, ELISA

### Cited Applications:

WB

### Species Specificity:

human

### Cited Species:

human

### Positive Controls:

WB : HEK-293 cells,

IP : HEK-293 cells,

## Background Information

ISG20L2, also named HSD38, is a member of a vertebrate exonucleases family. ISG20L2 is composed of at least two functional domains, one at its N-terminal half allowing intracellular localization and association with the binding partners and the other at its C-terminal half bearing the 3' to 5' exonuclease activity. The molecular weight of ISG20L2 is 39 kDa (PMID: 18065403).

## Notable Publications

Author	Pubmed ID	Journal	Application
Yan Yang	36040812	JCI Insight	WB
Yinliang Ma	38153123	Nucleic Acids Res	WB

## Storage

### Storage:

Store at -20°C. Stable for one year after shipment.

### Storage Buffer:

PBS with 0.02% sodium azide and 50% glycerol pH 7.3.

Aliquoting is unnecessary for -20°C storage

\*\*\* 20ul sizes contain 0.1% BSA

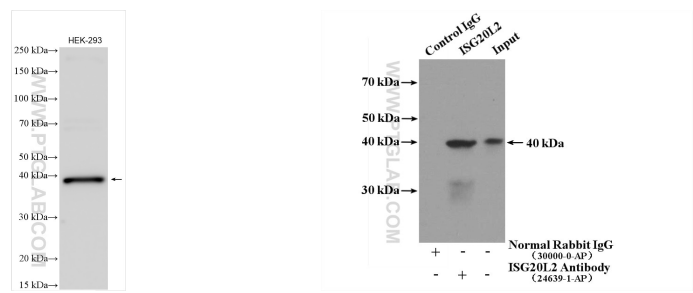
For technical support and original validation data for this product please contact:

T: 1 (888) 4PTGLAB (1-888-478-4522) (toll free in USA), or 1(312) 455-8498 (outside USA)

E: [proteintech@ptglab.com](mailto:proteintech@ptglab.com)  
W: [ptglab.com](http://ptglab.com)

This product is exclusively available under Proteintech Group brand and is not available to purchase from any other manufacturer.

Selected Validation Data



HEK-293 cells were subjected to SDS PAGE followed by western blot with 24639-1-AP (ISG20L2 antibody) at dilution of 1:3000 incubated at room temperature for 1.5 hours.

IP result of anti-ISG20L2 (IP:24639-1-AP, 4ug; Detection:24639-1-AP 1:1000) with HEK-293 cells lysate 3240ug.