

For Research Use Only

# MEP1A Polyclonal antibody, PBS Only

Catalog Number: 24640-1-PBS



## Basic Information

**Catalog Number:**

24640-1-PBS

**Size:**

100ug, Concentration: 1 mg/ml by Nanodrop;

**Source:**

Rabbit

**Isotype:**

IgG

**Immunogen Catalog Number:**

AG18950

**GenBank Accession Number:**

BC131714

**GeneID (NCBI):**

4224

**UNIPROT ID:**

Q16819

**Full Name:**

meprin A, alpha (PABA peptide hydrolase)

**Calculated MW:**

746 aa, 84 kDa

**Observed MW:**

84 kDa

**Purification Method:**

Antigen affinity purification

## Applications

**Tested Applications:**

WB, IHC, Indirect ELISA

**Species Specificity:**

human, mouse, rat

## Storage

**Storage:**

Store at -80°C.

**Storage Buffer:**

PBS Only

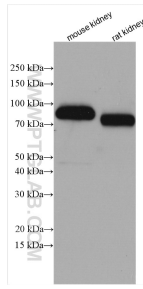
For technical support and original validation data for this product please contact:

T: 1 (888) 4PTGLAB (1-888-478-4522) (toll free in USA), or 1(312) 455-8498 (outside USA)

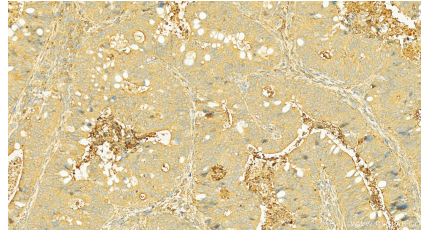
E: [proteintech@ptglab.com](mailto:proteintech@ptglab.com)  
W: [ptglab.com](http://ptglab.com)

This product is exclusively available under Proteintech Group brand and is not available to purchase from any other manufacturer.

## Selected Validation Data



Various lysates were subjected to SDS PAGE followed by western blot with 24640-1-AP (MEP1A antibody) at dilution of 1:1500 incubated at room temperature for 1.5 hours. This data was developed using the same antibody clone with 24640-1-PBS in a different storage buffer formulation.



Immunohistochemical analysis of paraffin-embedded colon cancer slide using 24640-1-AP (MEP1A antibody) at dilution of 1:300 (under 20x lens). Heat mediated antigen retrieval with Tris-EDTA buffer (pH 9.0). This data was developed using the same antibody clone with 24640-1-PBS in a different storage buffer formulation.