

For Research Use Only

# TOP2A Polyclonal antibody

Catalog Number: 24641-1-AP

Featured Product

15 Publications



## Basic Information

### Catalog Number:

24641-1-AP

### Size:

150ul, Concentration: 1000 ug/ml by Nanodrop;

### Source:

Rabbit

### Isotype:

IgG

### Immunogen Catalog Number:

AG19551

### GenBank Accession Number:

BC140791

### GeneID (NCBI):

7153

### UNIPROT ID:

P11388

### Full Name:

topoisomerase (DNA) II alpha 170kDa

### Calculated MW:

1531 aa, 174 kDa

### Observed MW:

174 kDa

### Purification Method:

Antigen affinity purification

### Recommended Dilutions:

WB 1:2000-1:16000

IP 0.5-4.0 ug for 1.0-3.0 mg of total protein lysate

IHC 1:50-1:500

IF/ICC 1:50-1:500

## Applications

### Tested Applications:

WB, IHC, IF/ICC, IP, ELISA

### Cited Applications:

WB, IHC, IF, IP, CoIP

### Species Specificity:

human, mouse

### Cited Species:

human, mouse, rat

### Positive Controls:

WB : HEK-293T cells, HeLa cells, HepG2 cells, MDA-MB-231 cells

IP : HeLa cells,

IHC : human pancreas cancer tissue, human breast cancer tissue

IF/ICC : A431 cells,

**Note-IHC: suggested antigen retrieval with TE buffer pH 9.0; (\*) Alternatively, antigen retrieval may be performed with citrate buffer pH 6.0**

## Background Information

TOP2A, also named as TOP2, belongs to the type II topoisomerase family. Topoisomerase II makes double-strand breaks. TOP2 control the topological states of DNA by transient breakage and subsequent rejoining of DNA strands. TOP2A may play a role in regulating the period length of ARNTL/BMAL1 transcriptional oscillation. DNA topoisomerase IIa (170 kDa, TOP2a/170) is essential in proliferating cells by resolving DNA topological entanglements during chromosome condensation, replication, and segregation.

## Notable Publications

Author	Pubmed ID	Journal	Application
Jun-Song Liu	25333415	Oncol Rep	
Jingjun Wu	26612655	Chem Biol Interact	WB
Li Wang	33236014	bioRxiv	WB

## Storage

### Storage:

Store at -20°C. Stable for one year after shipment.

### Storage Buffer:

PBS with 0.02% sodium azide and 50% glycerol pH 7.3.

Aliquoting is unnecessary for -20°C storage

\*\*\* 20ul sizes contain 0.1% BSA

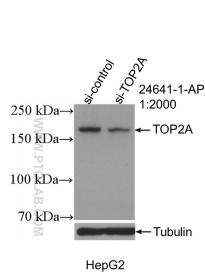
For technical support and original validation data for this product please contact:

T: 1 (888) 4PTGLAB (1-888-478-4522) (toll free in USA), or 1(312) 455-8498 (outside USA)

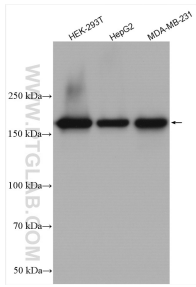
E: [proteintech@ptglab.com](mailto:proteintech@ptglab.com)  
W: [ptglab.com](http://ptglab.com)

This product is exclusively available under Proteintech Group brand and is not available to purchase from any other manufacturer.

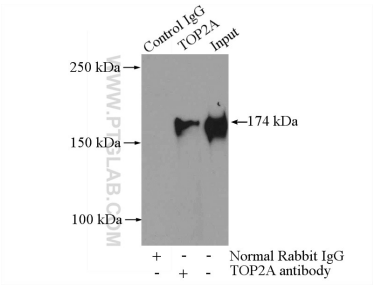
Selected Validation Data



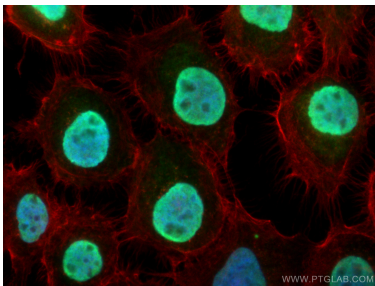
WB result of TOP2A antibody (24641-1-AP; 1:2000; incubated at room temperature for 1.5 hours) with sh-Control and sh-TOP2A transfected HepG2 cells.



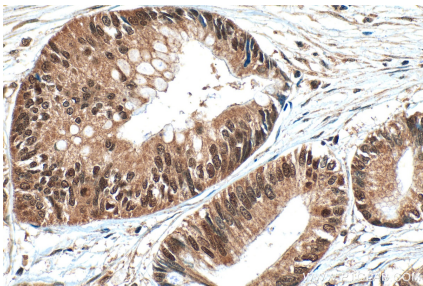
Various lysates were subjected to SDS PAGE followed by western blot with 24641-1-AP (TOP2A antibody) at dilution of 1:8000 incubated at room temperature for 1.5 hours.



IP result of anti-TOP2A (IP:24641-1-AP, 4ug; Detection:24641-1-AP 1:1000) with HeLa cells lysate 2000ug.



Immunofluorescent analysis of (4% PFA) fixed A431 cells using TOP2A antibody (24641-1-AP) at dilution of 1:200 and CoraLite®488-Conjugated Goat Anti-Rabbit IgG(H+L), CL594-Phalloidin (red).



Immunohistochemical analysis of paraffin-embedded human pancreas cancer tissue slide using 24641-1-AP (TOP2A antibody) at dilution of 1:200 (under 40x lens). Heat mediated antigen retrieval with Tris-EDTA buffer (pH 9.0).