

For Research Use Only

TMEM111 Polyclonal antibody, PBS Only

Catalog Number: 24645-1-PBS

Featured Product



Basic Information

Catalog Number:

24645-1-PBS

Size:

100ug, Concentration: 1 mg/ml by Nanodrop;

Source:

Rabbit

Isotype:

IgG

Immunogen Catalog Number:

AG18236

GenBank Accession Number:

BC022807

GeneID (NCBI):

55831

UNIPROT ID:

Q9POL2

Full Name:

transmembrane protein 111

Calculated MW:

261 aa, 30 kDa

Observed MW:

30 kDa

Purification Method:

Antigen affinity purification

Applications

Tested Applications:

WB, IHC, IF/ICC, Indirect ELISA

Species Specificity:

human, mouse, rat

Background Information

TMEM111, also names as EMC3, is part of the endoplasmic reticulum-associated secretory pathway (PMID: 19797678). TMEM111 was required for murine pulmonary surfactant synthesis and lung function at birth (PMID: 29083321). It can be detect a band of 30 kDa.

Storage

Storage:

Store at -80°C.

Storage Buffer:

PBS Only

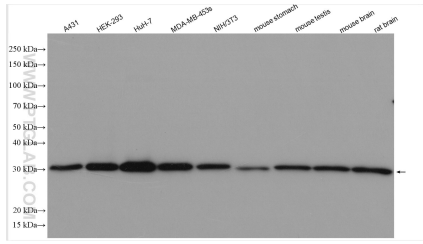
For technical support and original validation data for this product please contact:

T: 1 (888) 4PTGLAB (1-888-478-4522) (toll free in USA), or 1(312) 455-8498 (outside USA)

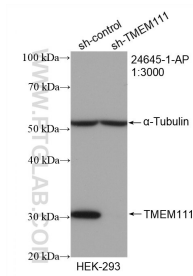
E: proteintech@ptglab.com
W: ptglab.com

This product is exclusively available under Proteintech Group brand and is not available to purchase from any other manufacturer.

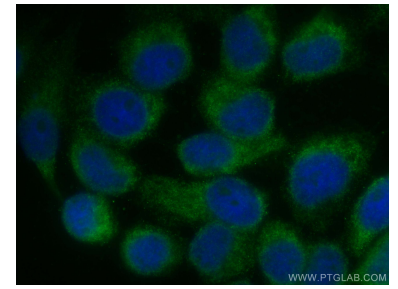
Selected Validation Data



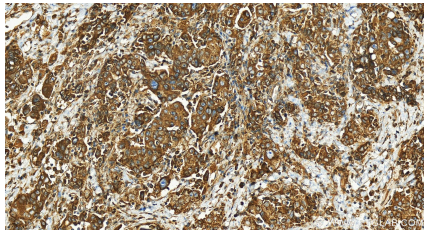
Various lysates were subjected to SDS PAGE followed by western blot with 24645-1-AP (TMEM111 antibody) at dilution of 1:1000 incubated at room temperature for 1.5 hours. This data was developed using the same antibody clone with 24645-1-PBS in a different storage buffer formulation.



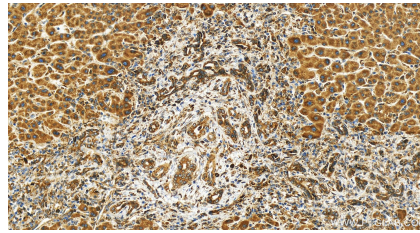
WB result of TMEM111 antibody (24645-1-AP; 1:3000; incubated at room temperature for 1.5 hours) with sh-Control and sh-TMEM111 transfected HEK-293 cells. This data was developed using the same antibody clone with 24645-1-PBS in a different storage buffer formulation.



Immunofluorescent analysis of (-20°C Methanol) fixed A431 cells using TMEM111 antibody (24645-1-AP) at dilution of 1:200 and CoraLite@488-Conjugated AffiniPure Goat Anti-Rabbit IgG(H+L). This data was developed using the same antibody clone with 24645-1-PBS in a different storage buffer formulation.



Immunohistochemical analysis of paraffin-embedded human ovary cancer tissue slide using 24645-1-AP (TMEM111 antibody) at dilution of 1:200 (under 20x lens). Heat mediated antigen retrieval with Tris-EDTA buffer (pH 9.0). This data was developed using the same antibody clone with 24645-1-PBS in a different storage buffer formulation.



Immunohistochemical analysis of paraffin-embedded human intrahepatic cholangiocarcinoma tissue slide using 24645-1-AP (TMEM111 antibody) at dilution of 1:400 (under 20x lens). Heat mediated antigen retrieval with Tris-EDTA buffer (pH 9.0). This data was developed using the same antibody clone with 24645-1-PBS in a different storage buffer formulation.